

CB2A 齿轮泵 GROUP2 GEAR PUMPS

简介 General Description

CB2A 齿轮泵系高压小排量齿轮油泵，由一对高强度齿轮、轴套、泵体、前盖、后盖等主要部件组成，轴向间隙由高精度浮动轴套自动补偿，使得CB2A 齿轮泵具有高的机械效率和容积效率，该泵噪音低、可靠性高，低的重量/功率比，该系列泵具有顺时针，逆时针两种旋向。

The CB2A gear pump consists of a gear pair supported by two aluminum bearing blocks, a housing, front cover and rear cover. The axial clearance can be automatically compensated by the bearing blocks. The CB2A pump features simple structure, high mechanical and volumetric efficiency, low noise, high reliability as well as low weight/power ratio. Both CW and CCW direction pumps are available.

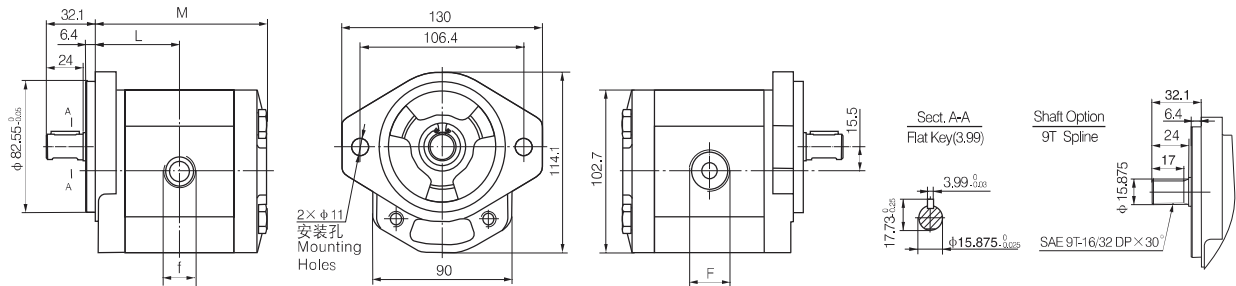


型谱 Order Code

CB2A - F * * * * *

| | | | | | |
|----------------------------------|-----------------------------------------|-----------------------------|----------------------|------------|---------------------------------------|
| 20MPa 额定压力 Rated pressure | | | 轴端形式 Shaft Option | 空白 Omit | 11mm安装孔 11mm Mounting Hole |
| 4~35mL/r 公称排量 Displacement | | | 轴端形式 Shaft Option | D | 11mm开口式安装孔 11mm Open Mounting Hole |
| 空白或S Omit or S | SAE 油口 SAE O-ring boss | 油口形式 Port Configurations | 轴端形式 Shaft Option | 空白 Omit | 9 齿花键 9T Spline |
| A | 管螺纹 (BSPP) Gas Threaded Ports (BSPP) | | A | | 平键 (3.99mm) Flat key (3.99mm) |
| B | 公制螺纹 Metric Threaded Ports | | 空白 Omit | | 右旋 CW 左旋 CCW |
| | | | 旋向 Direction | F | |

外形尺寸图 Outline Dimension



技术参数 Technical Data

| Model 型号 | Displacement 排量 mL/r(in ³ /r) | 压力 Pressure (MPa) | | | 转速 Speed (RPM) | | 尺寸 Dimension | | | | | | | | |
|---------------|------------------------------------------------|-------------------|------|-------|----------------|-----------|--------------|-------|-----------------------------------|--------------------------------|------|------|-------|-----------------------------|-----------------------------|
| | | P1 | P2 | P3 | Rated 额定 | Max 最大 | L(mm) | M(mm) | F 进油口 Inlet | f 出油口 Outlet | | | | | |
| CB2A-F4 **** | 4.47 (0.273) | 20 | 25 | 28 | 2000 | 4000 | 45.6 | 93.2 | SAE □ SAE port 1 1/16 -12UN | SAE □ SAE port 7/8-14UNF | | | | | |
| CB2A-F6 **** | 6.37 (0.389) | | | | | | 47.1 | 96.3 | | | | | | | |
| CB2A-F7 **** | 7.04 (0.428) | | | | | | 47.7 | 97.4 | | | | | | | |
| CB2A-F9 **** | 9.55 (0.584) | | | | | | 49.6 | 101.3 | | | | | | | |
| CB2A-F11 **** | 11.49 (0.701) | | | | | | 51.3 | 104.6 | BSPP □ BSPP port G3/4 | BSPP □ BSPP port G1/2 | | | | | |
| CB2A-F14 **** | 14.04 (0.857) | | | | | | 53.4 | 108.9 | | | | | | | |
| CB2A-F15 **** | 15.92 (0.934) | | | | | | 18 | 20 | 22 | 1500 | 2800 | 54.9 | 111.9 | 公制口 Metric port M27x2 | 公制口 Metric port M22x2 |
| CB2A-F17 **** | 17.76 (1.050) | | | | | | | | | | 2500 | 56.4 | 114.9 | | |
| CB2A-F21 **** | 21.07 (1.285) | 2200 | 59.1 | 120.3 | | | | | | | | | | | |
| CB2A-F23 **** | 23.27 (1.441) | 15 | 17 | 19 | 1800 | 2000 | 60.9 | 123.9 | 1 5/16 -12UN G1 M33x2 | 1 1/16 -12UN G3/4 M27x2 | | | | | |
| CB2A-F28 **** | 28.05 (1.713) | | | | | 64 | 130.1 | | | | | | | | |
| CB2A-F32 **** | 31.88 (1.946) | | | | | 68.1 | 138.2 | | | | | | | | |
| CB2A-F35 **** | 35.06 (2.141) | | | | | 70.6 | 143.2 | | | | | | | | |