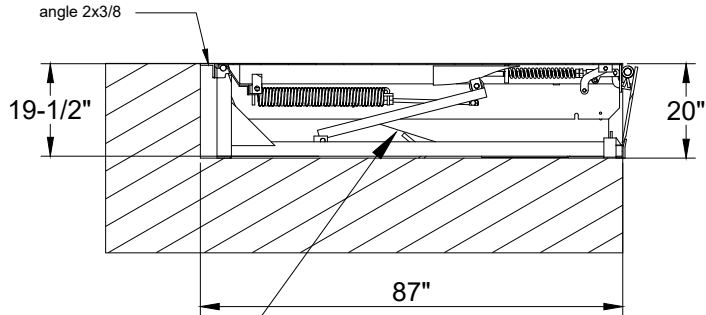
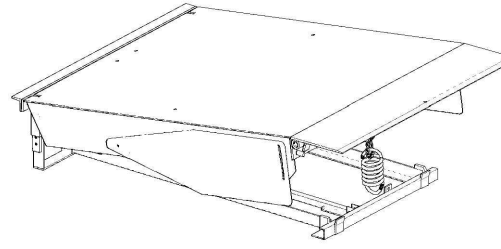


MECHANICAL DOCK LEVELER

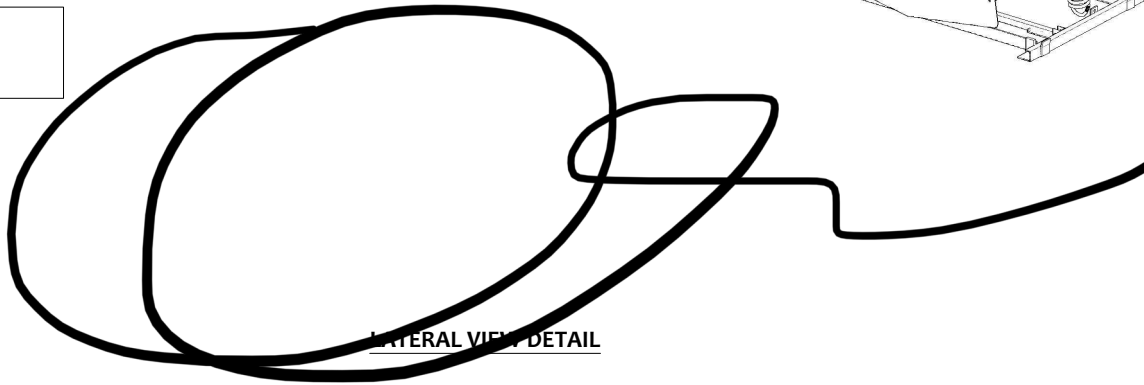
LATERAL VIEW



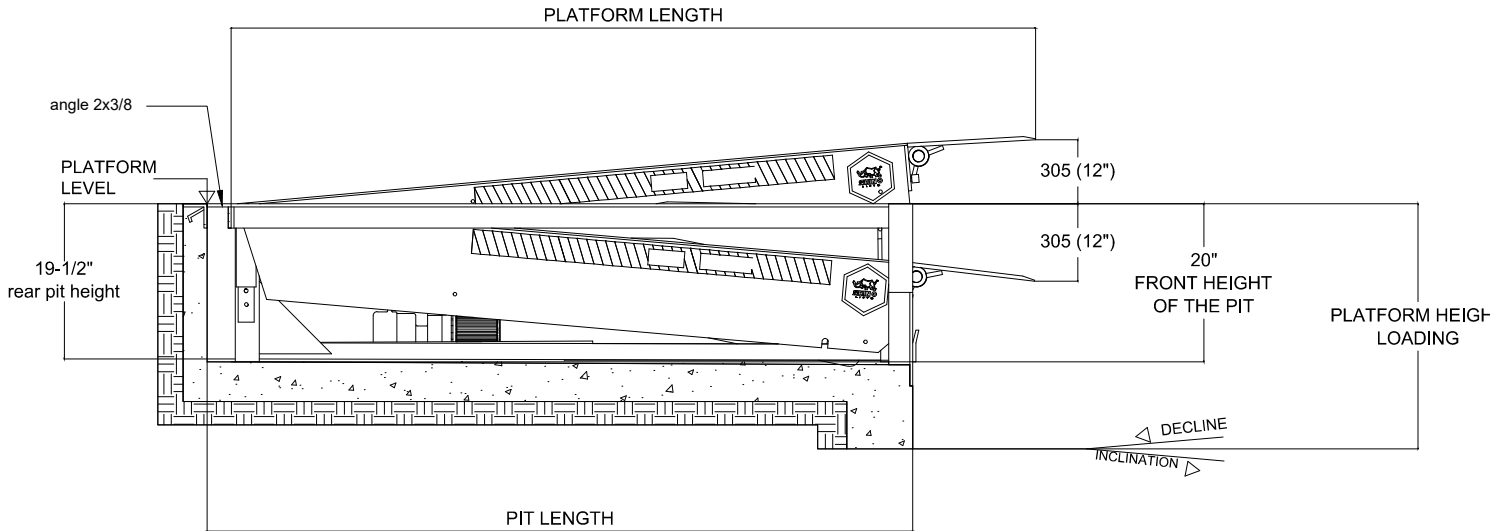
ISOMETRIC VIEW



La ubicación del mecanismo es dentro del mismo foso donde se encuentra la rampa.



LATERAL VIEW DETAIL



OBSERVATIONS ON THE EQUIPMENT	

PARTS LIST		
Item	Description	Qty
1	Mecanismo para labio	1
2	Mecanismo para plataforma	1
3	Baston de seguridad para plataforma	1
4	Freno	1

MODIFICATIONS			
Rev.	Request	Description	Date
1	Engineering	Issuance for production	06/12/2022
2	-----	-----	-----
3	-----	-----	-----
4	-----	-----	-----

REMARKS	
TOLERANCE SUMS ARE NOT ALLOWED IN TOTAL DIMENSIONS.	
Table 1 of Tolerances: xxxx ± 2mm xxx ± 2mm xx ± 1mm x ± 1mm ∠ ± 1° ∅ xxx ± 2mm ∅ xxx ± 2mm ∅ xx ± 0.5mm ∅ x ± 0.2mm	WEIGHT:

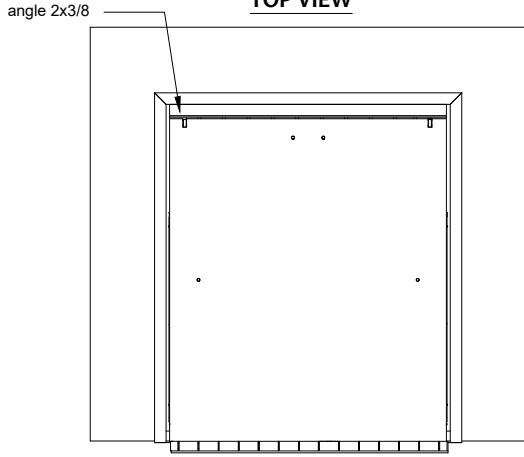
Designed:	Reviewed:	Approved:	Date:
A. Gonzalez	G. Resendiz	G. Resendiz	06/12/2022

Dimensional unit	Geometric Tolerances	Standard drawing	Projection
Millimeters	Reference Table of Tolerances		⊕ □

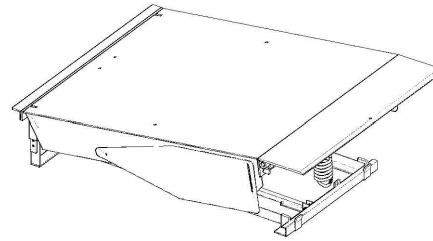
Name of the equipment: MECHANICAL DOCK LEVELER RAMP	
Capacity:	MECHANICAL RAMP FOR 35,000 LB

MECHANICAL DOCK LEVELER

TOP VIEW



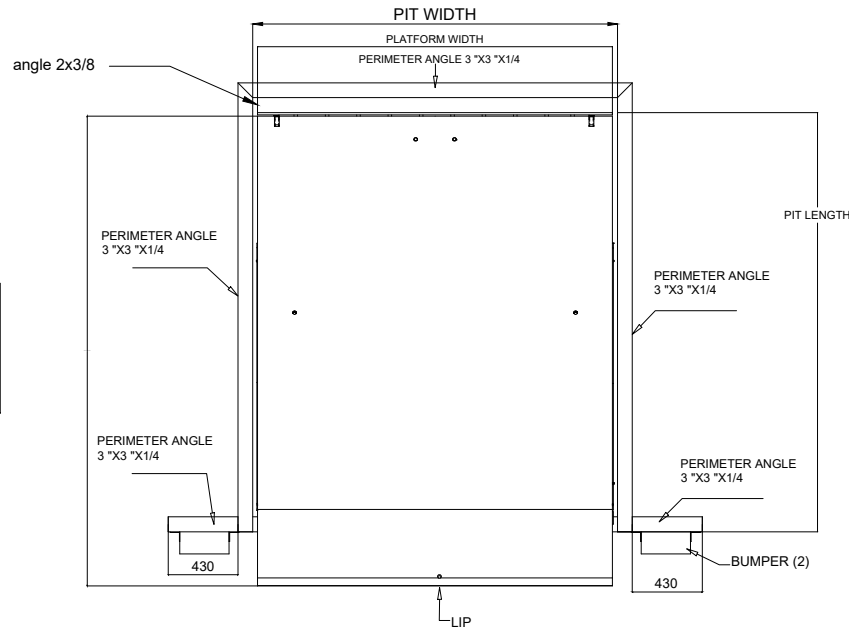
ISOMETRIC VIEW



INSTALLATION DETAILS

MODEL (Nominal Size)		INSTALLATION DETAILS				PIT SPECIFICATIONS				PLATFORM HEIGHT
		WIDTH		LENGTH		WIDTH		LENGTH		HEIGHT
mm	Ft	mm	inch	mm	inch	mm	inch	mm	inch	mm
1778x2438	5'-10" x 8'	1778	70"	2527	99 1/2"	1829	72"	2210	87"	1200

TOP VIEW DETAIL



OBSERVATIONS ON THE EQUIPMENT

PARTS LIST

Item	Description	Qty
1		
2		
3		

MODIFICATIONS

Rev.	Request	Description	Date
1	Engineering	Issuance for production	06/12/2022
2	-----	-----	-----
3	-----	-----	-----
4	-----	-----	-----

Table 1 of Tolerances:
 xxxx ± 2mm
 xxx ± 2mm
 xx ± 1mm
 x ± 1mm
 ∠ ± 1°
 Ø xxxx ± 2mm
 Ø xxx ± 2mm
 Ø xx ± 0.5mm
 x ± 0.2mm

REMARKS

TOLERANCE SUMS ARE NOT ALLOWED IN TOTAL DIMENSIONS.

WEIGHT:

Designed:	Reviewed:	Approved:	Date:
A. Gonzalez	G. Resendiz	G. Resendiz	06/12/2022

Dimensional unit	Geometric Tolerances	Standard drawing	Projection
Millimeters	Reference Table 1 of Tolerances		

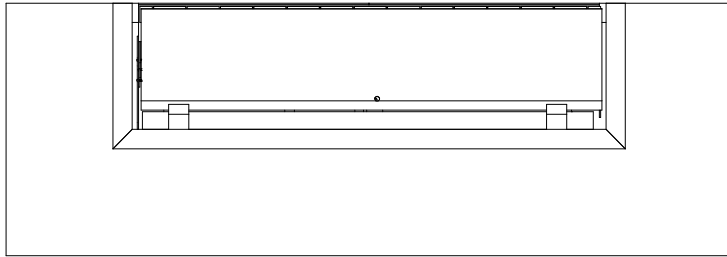
Name of the equipment: MECHANICAL DOCK LEVELER RAMP

Capacity: MECHANICAL RAMP FOR 35,000 LB

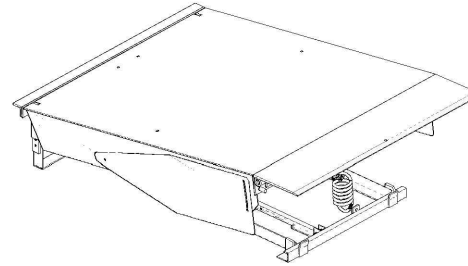


MECHANICAL DOCK LEVELER

FRONT VIEW



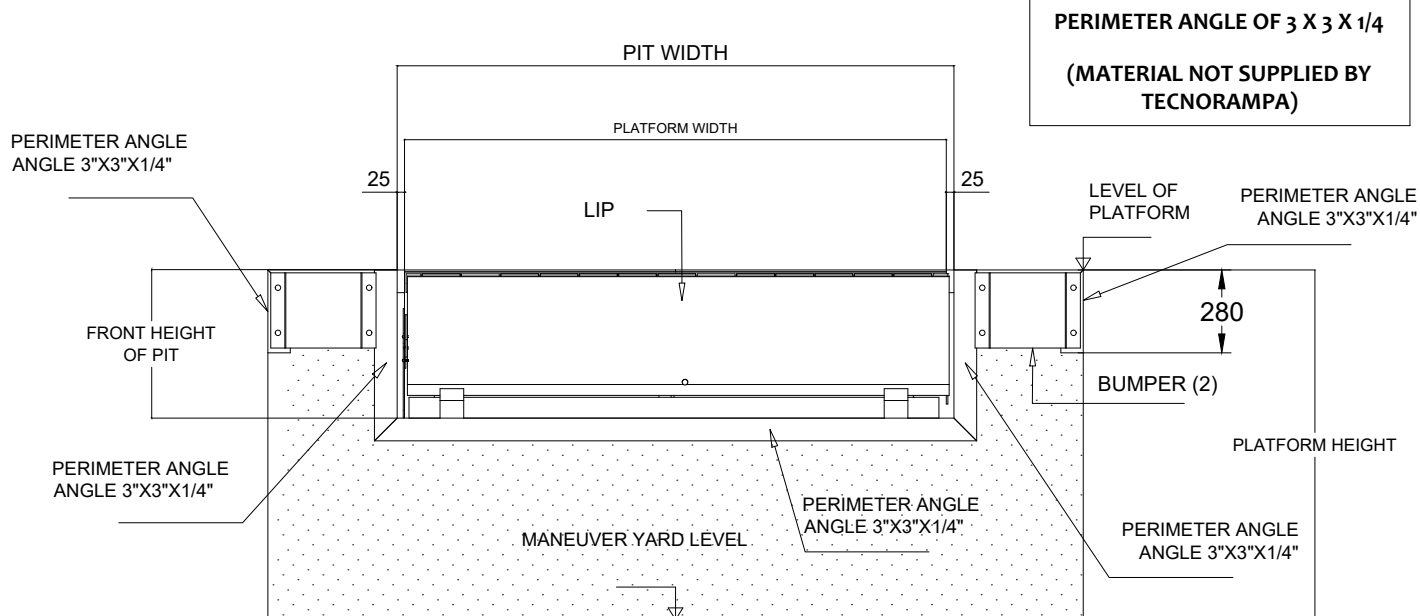
ISOMETRIC VIEW



INSTALLATION DETAILS

MODEL (Nominal Size)		INSTALLATION DETAILS				PIT SPECIFICATIONS				PLATFORM HEIGHT
		WIDTH		LENGTH		WIDTH		LENGTH		HEIGHT
mm	Ft	mm	inch	mm	inch	mm	inch	mm	inch	mm
1778x2438	5'-10" x 8'	1778	70"	2527	99 1/2"	1829	72"	2210	87"	1200

DETAIL FRONT VIEW



OBSERVATIONS ON THE EQUIPMENT

PARTS LIST

Item	Description	Qty
1		
2		
3		

MODIFICATIONS

Rev.	Request	Description	Date
1	Engineering	Issuance for production	06/12/2022
2	-----	-----	-----
3	-----	-----	-----
4	-----	-----	-----

Table 1 of Tolerances:
 xxx ± 2mm
 xxx ± 2mm
 xx ± 1mm
 x ± 1mm
 ∠ ± 1°
 Ø xxx ± 2mm
 Ø xxx ± 2mm
 Ø xx ± 0.5mm
 x ± 0.2mm

REMARKS

TOLERANCE SUMS ARE NOT ALLOWED IN TOTAL DIMENSIONS.

WEIGHT:

Designed:	Reviewed:	Approved:	Date:
A. Gonzalez	G. Resendiz	G. Resendiz	06/12/2022

Dimensional unit	Geometric Tolerances	Standard drawing	Projection
Millimeters	Reference Table 1 of Tolerances		

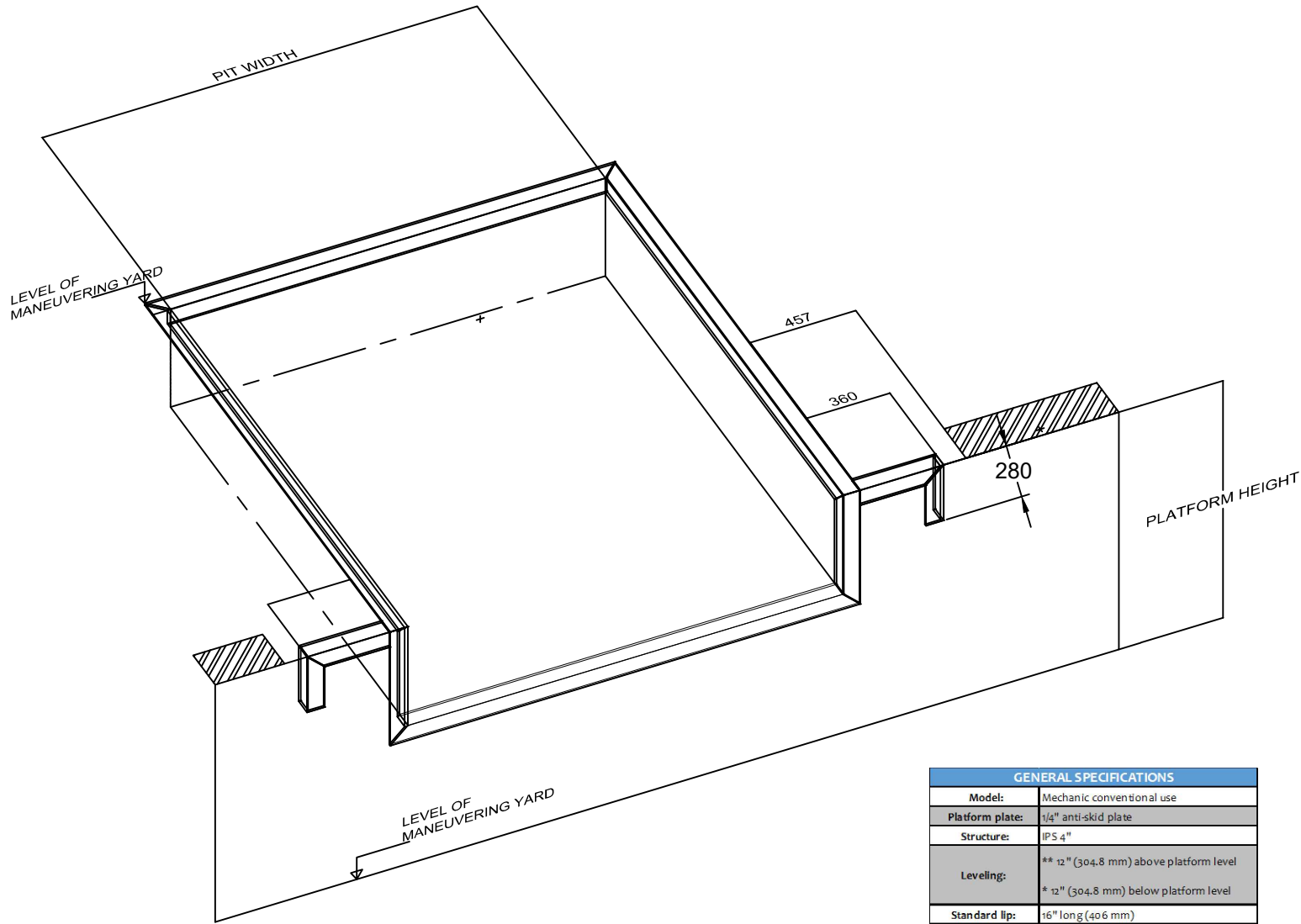
Name of the equipment: MECHANICAL DOCK LEVELER RAMP

Capacity: MECHANICAL RAMP FOR 35,000 LB



MECHANICAL DOCK LEVELER

ISOMETRIC VIEW PREPARATION TO INSTALL LEVELLER



OBSERVATIONS ON THE EQUIPMENT	

PARTS LIST		
Item	Description	Qty
1		
2		
3		

MODIFICATIONS			
Rev.	Request	Description	Date
1	Engineering	Issuance for production	06/12/2022
2	-----	-----	-----
3	-----	-----	-----
4	-----	-----	-----

REMARKS	
TOLERANCE SUMS ARE NOT ALLOWED IN TOTAL DIMENSIONS.	
Table 1 of Tolerances: xxxx ± 2mm xxx ± 2mm xx ± 1mm x ± 1mm ∠ ± 1° ∅ xxx ± 2mm ∅ xxx ± 2mm ∅ xx ± 0.5mm ∅ x ± 0.2mm	WEIGHT:

GENERAL SPECIFICATIONS	
Model:	Mechanic conventional use
Platform plate:	1/4" anti-skid plate
Structure:	IPS 4"
Leveling:	** 12" (304.8 mm) above platform level * 12" (304.8 mm) below platform level
Standard lip:	16" long (406 mm)
Lip plate:	5/8" anti-skid plate"
Security:	*Platform support (SUPPORT) bar * Side guards (foot protectors)
Load capacity:	Dynamic 35,000 lb (15,875 kg)
Finishing:	Lead gray/yellow electrostatic painting

Designed:	Reviewed:	Approved:	Date:
A. Gonzalez	G. Resendiz	G. Resendiz	06/12/2022

Dimensional unit	Geometric Tolerances	Standard drawing	Projection
Millimeters	Reference Table of Tolerances		

Name of the equipment: MECHANICAL DOCK LEVELER RAMP	
Capacity:	MECHANICAL RAMP FOR 35,000 LB