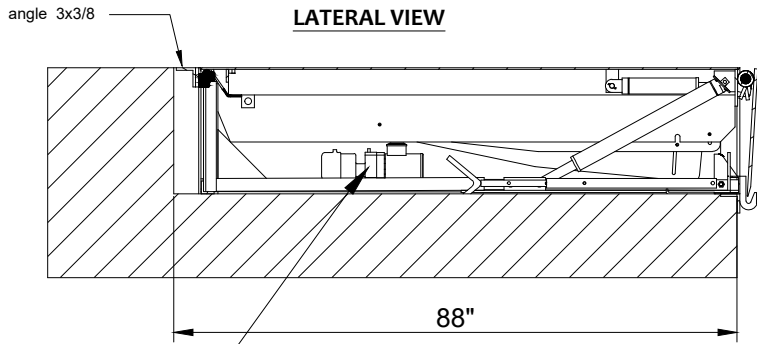
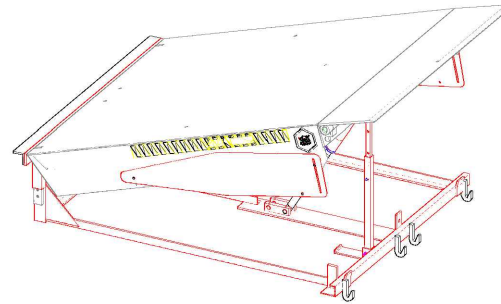


HYDRAULIC DOCK LEVELER



The location of the hydraulic unit is inside the same pit where the ramp is located.

ISOMETRIC VIEW



COMMENTS ON THE EQUIPMENT

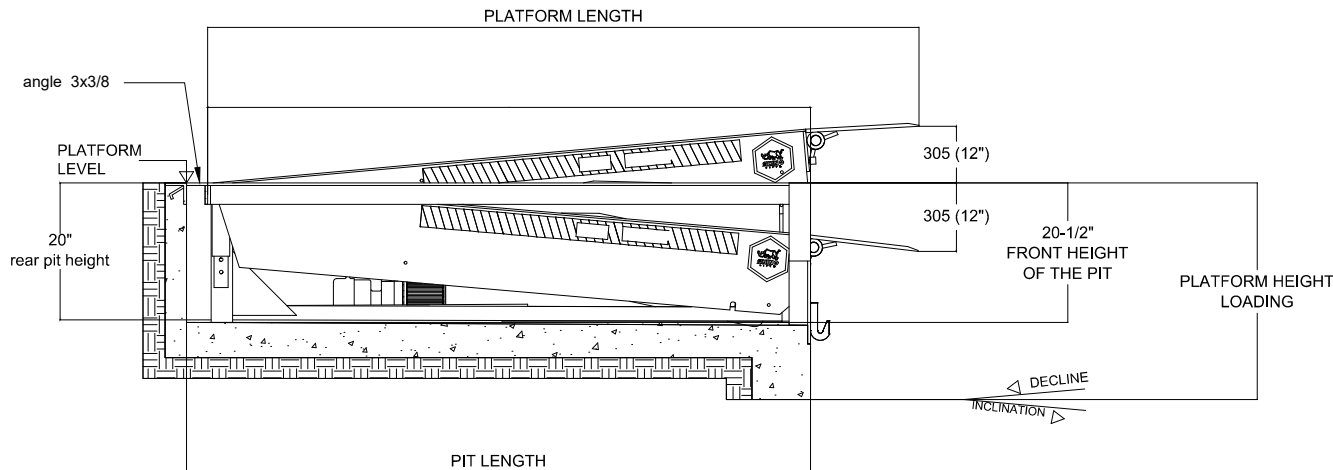
PARTS LIST

Item	Description	Qty
1	Mecanismo para cilindro	1
2	Mecanismo para plataforma	1
3	Baston de seguridad para plataforma	2

MODIFICATIONS

Rev.	Request	Description	Date
1	Engineering	Issuance for Production	31/03/2023
2	-----	-----	-----
3	-----	-----	-----
4	-----	-----	-----

LATERAL VIEW DETAIL



Tolerances
Table 1:
xxxx ± 2mm
xxx ± 2mm
xx ± 1mm
x ± 1mm
∠ ± 1°
∅ xxx ± 2mm
∅ xxx ± 2mm
∅ xx ± 0.5mm
∅ x ± 0.2mm

REMARKS

TOLERANCE SUMS ARE NOT ALLOWED IN THE OVERALL DIMENSIONS.

WEIGHT:

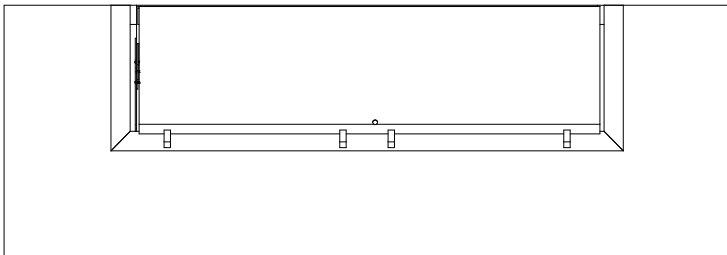
Design:	Reviewed:	Approved:	Date:
A. Gonzalez	G. Resendiz	G. Resendiz	31/03/2023

Dimensional unit	Geometric Tolerances	Standard drawing	Projection
Millimeters	Reference Table 1 of Tolerances		

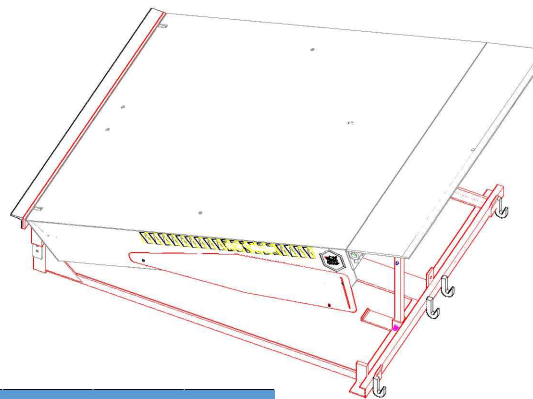
Name of equipment:	HYDRAULIC DOCK LEVELER
Capacity:	LEVELER FOR 40,000

HYDRAULIC DOCK LEVELER

FRONT VIEW



ISOMETRIC VIEW



INSTALLATION DETAILS									
MODEL (Size)		PLATFORM DIMENSIONS				PIT SPECIFICATIONS			
		WIDTH		LENGTH		WIDTH		LENGTH	
mm	Ft	mm	inch	mm	inch	mm	inch	mm	inch
2130X21538	7"X 8'	2130	84"	2132	83.1916"	2184	86"	2235	88"

COMMENTS ON THE EQUIPMENT

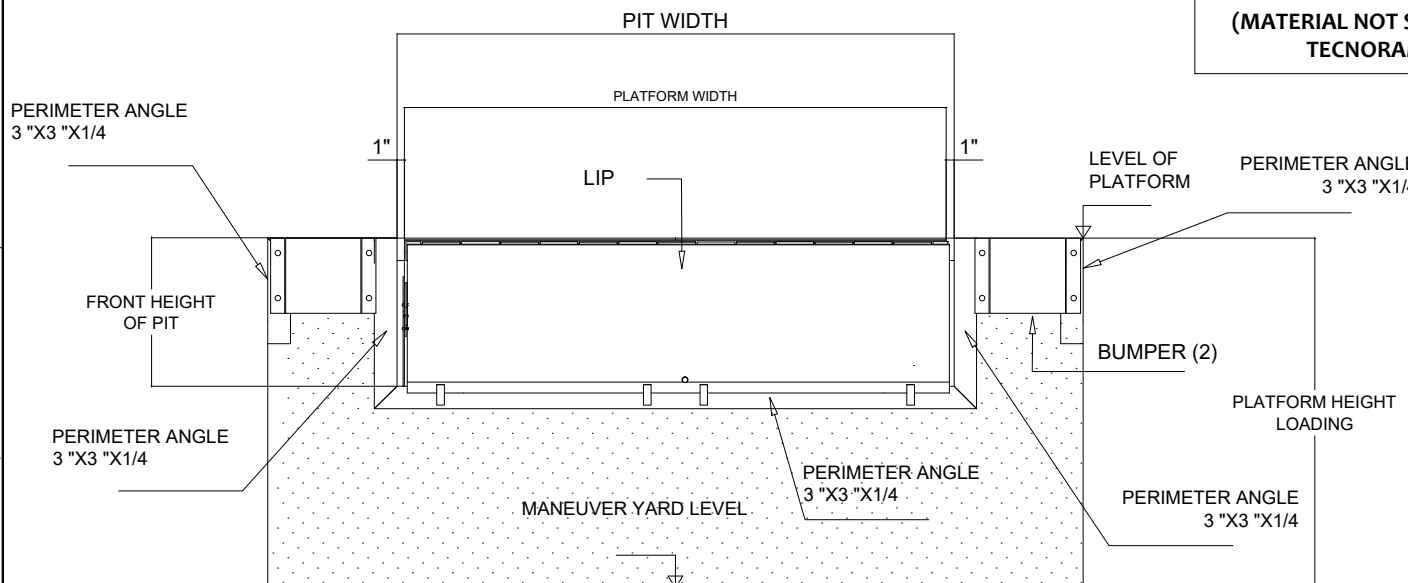
PARTS LIST

Item	Description	Qty
1		
2		
3		

MODIFICATIONS

Rev.	Request	Description	Date
1	Engineering	Issuance for Production	31/03/2023
2	-----	-----	-----
3	-----	-----	-----
4	-----	-----	-----

FRONT VIEW DETAIL



**PERIMETER ANGLE OF 3 X 3 X 1/4
(MATERIAL NOT SUPPLIED BY TECNORAMPA)**

Tolerances
Table 1:
xxxx ± 2mm
xxx ± 2mm
xx ± 1mm
x ± 1mm
∠ ± 1°
Ø xxxx ± 2mm
Ø xxx ± 2mm
Ø xx ± 0,5mm
x ± 0,2mm

REMARKS
TOLERANCE SUMS ARE NOT ALLOWED IN THE OVERALL DIMENSIONS.
WEIGHT:

Design:	Reviewed:	Approved:	Date:
A. Gonzalez	G. Resendiz	G. Resendiz	31/03/2023

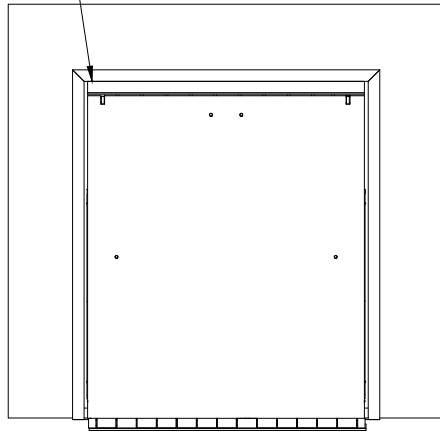
Dimensional unit	Geometric Tolerances	Standard drawing	Projection
Millimeters	Reference Table 1 of Tolerances		

Name of equipment:	HYDRAULIC DOCK LEVELER
Capacity:	LEVELER FOR 40,000

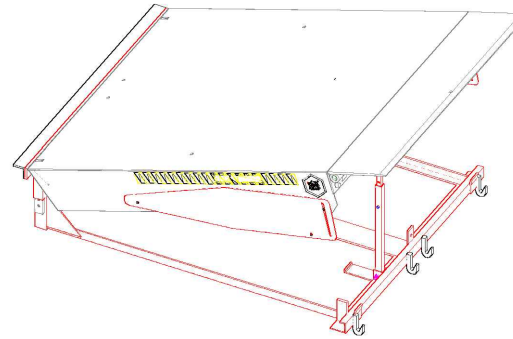
HYDRAULIC DOCK LEVELER

angle 3x3/8

TOP VIEW



ISOMETRIC VIEW



COMMENTS ON THE EQUIPMENT

PARTS LIST

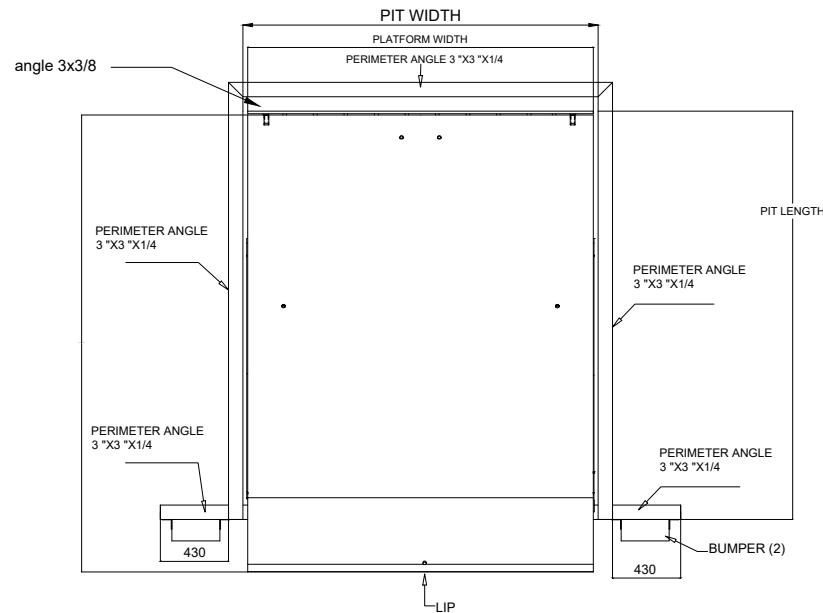
Item	Description	Qty
1		
2		
3		

MODIFICATIONS

Rev.	Request	Description	Date
1	Engineering	Issuance for Production	31/03/2023
2			
3			
4			

INSTALLATION DETAILS									
MODEL (Size)		PLATFORM DIMENSIONS				PIT SPECIFICATIONS			
		WIDTH		LENGTH		WIDTH		LENGTH	
mm	Ft	mm	inch	mm	inch	mm	inch	mm	inch
2130x2538	7'x 8'	2130	84"	2132	83.1916"	2184	86"	2235	88"

TOP VIEW DETAIL



PERIMETER ANGLE 3 X 3 X 1/4
(MATERIAL NOT SUPPLIED BY TECNORAMPA)

Tolerances

Table 1:
 xxxx ± 2mm
 xxx ± 2mm
 xx ± 1mm
 x ± 1mm
 ∠ ± 1°
 ∅ xxxx ± 2mm
 ∅ xxx ± 2mm
 ∅ xx ± 0.5mm
 ∅ x ± 0.2mm

REMARKS

TOLERANCE SUMS ARE NOT ALLOWED IN THE OVERALL DIMENSIONS.

WEIGHT:

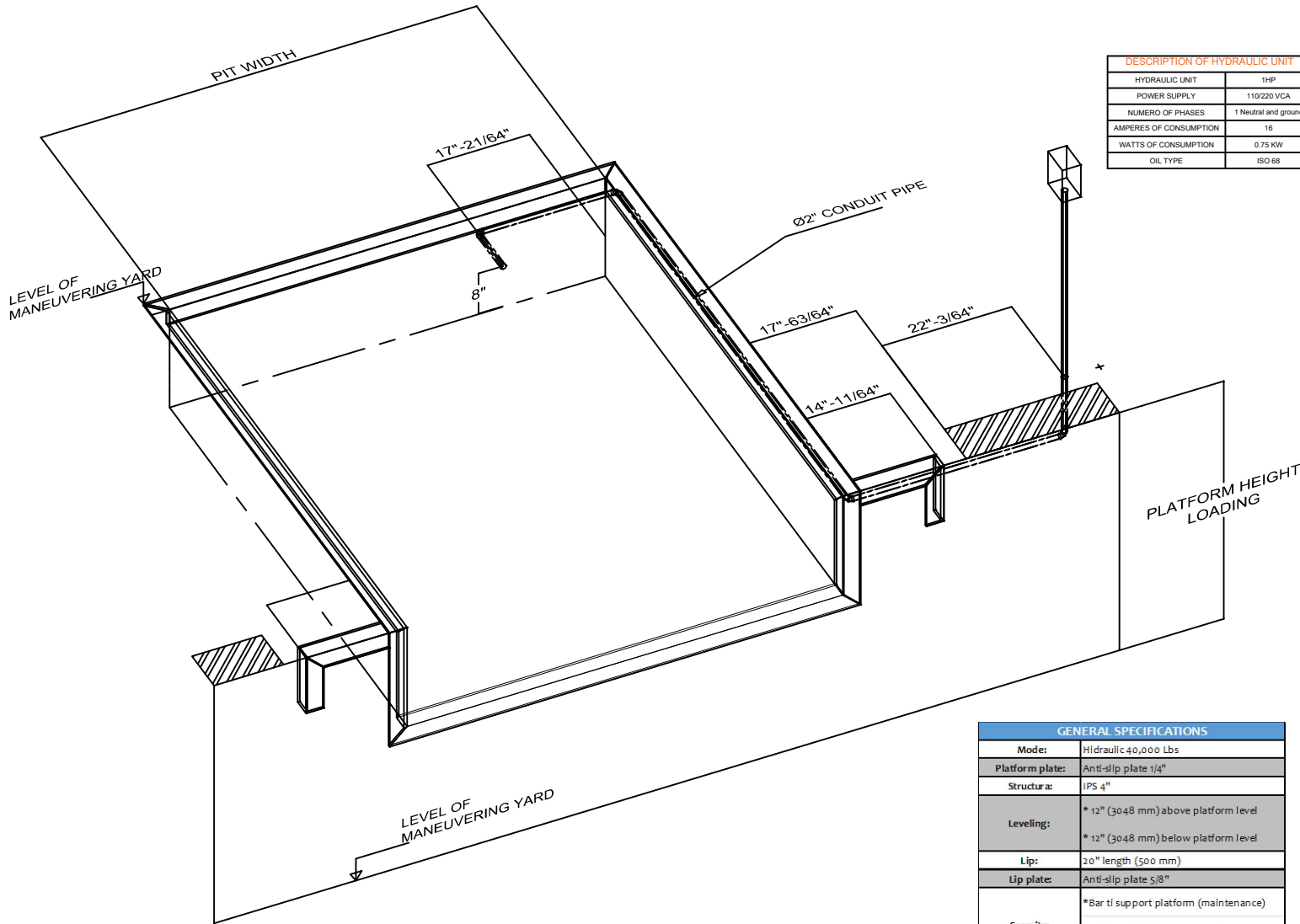
Design:	Reviewed:	Approved:	Date:
A. Gonzalez	G. Resendiz	G. Resendiz	31/03/2023

Dimensional unit	Geometric Tolerances	Standard drawing	Projection
Millimeters	Reference Table of Tolerances		

Name of equipment:	HYDRAULIC DOCK LEVELER
Capacity:	LEVELER FOR 40,000

DOCK LEVELLER HYDRAULIC

ISOMETRIC VIEW PREPARATION TO INSTALL LEVELER



DESCRIPTION OF HYDRAULIC UNIT	
HYDRAULIC UNIT	1HP
POWER SUPPLY	110/220 VCA
NUMERO OF PHASES	1 Neutral and ground
AMPERES OF CONSUMPTION	16
WATTS OF CONSUMPTION	0.75 KW
OIL TYPE	ISO 68

COMMENTS ON THE EQUIPMENT

PARTS LIST		
Item	Description	Qty
1		
2		
3		

MODIFICATIONS			
Rev.	Request	Description	Date
1	Engineering	Issuance for Production	31/03/2023
2			
3			
4			

Tolerances Table:
 xxxx ± 2mm
 xxx ± 2mm
 xx ± 1mm
 x ± 1mm
 ∠ ± 1°
 ∅ xxxx ± 2mm
 ∅ xxx ± 2mm
 ∅ xx ± 0.5mm
 ∅ x ± 0.2mm

REMARKS
 TOLERANCE SUMS ARE NOT ALLOWED IN THE OVERALL DIMENSIONS.

WEIGHT:

GENERAL SPECIFICATIONS	
Mode:	Hydraulic 40,000 Lbs
Platform plate:	Anti-slip plate 1/4"
Structura:	IPS 4"
Leveling:	* 12" (3048 mm) above platform level * 12" (3048 mm) below platform level
Lip:	20" length (500 mm)
Lip plate:	Anti-slip plate 5/8"
Security:	*Bar ti support platform (maintenance) * Side guards (foot protectors) *Safety valve
Load capacity:	dimanic 40,000 lb (18,143 kg)
Finish:	Lead gray/yellow electrostatic painting

Design:	Reviewed:	Approved:	Date:
A. Gonzalez	G. Resendiz	G. Resendiz	31/03/2023

Dimensional unit	Geometric Tolerances	Standard drawing	Projection
Millimeters	Reference Table of Tolerances		

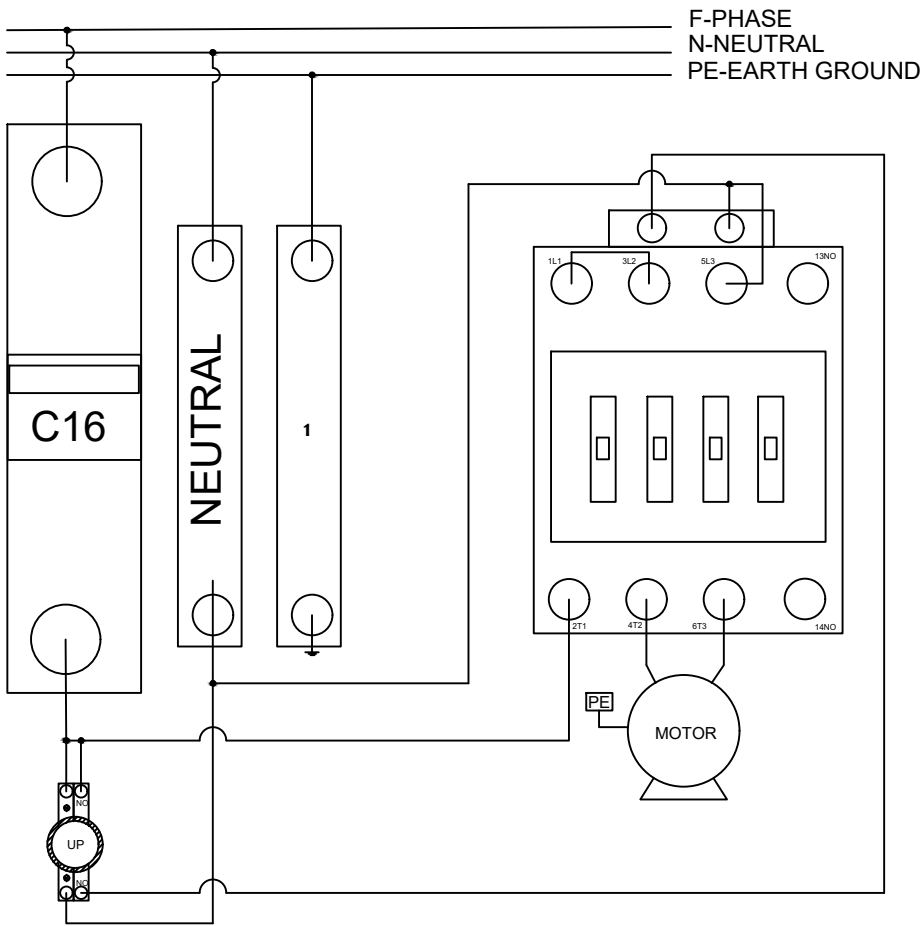
Name of equipment: HYDRAULIC DOCK LEVELER

Capacity: LEVELER FOR 40,000

HYDRAULIC DOCK LEVELER

DIAGRAM FOR ELECTRICAL INSTALLATION

DOCK LEVELLER
110VCA / 1HP



SINGLE-PHASE
POWER SUPPLY
110VCA
F+N+PE

- PHASE
- NEUTRAL
- EARTH GROUND
- POWER AMPLIFIER

COMMENTS ON THE EQUIPMENT

PARTS LIST		
Item	Description	Qty
1		
2		
3		

MODIFICATIONS			
Rev.	Request	Description	Date
1	Engineering	Issuance for Production	30/06/2022
2	-----	-----	-----
3	-----	-----	-----
4	-----	-----	-----

Tolerances Table:		REMARKS
xxxx ± 2mm		
xxx ± 2mm		
xx ± 1mm		
x ± 1mm		
∠ ± 1°		
∅ xxxx ± 2mm		WEIGHT:
∅ xxx ± 2mm		
∅ xx ± 0.5mm		
∅ x ± 0.2mm		

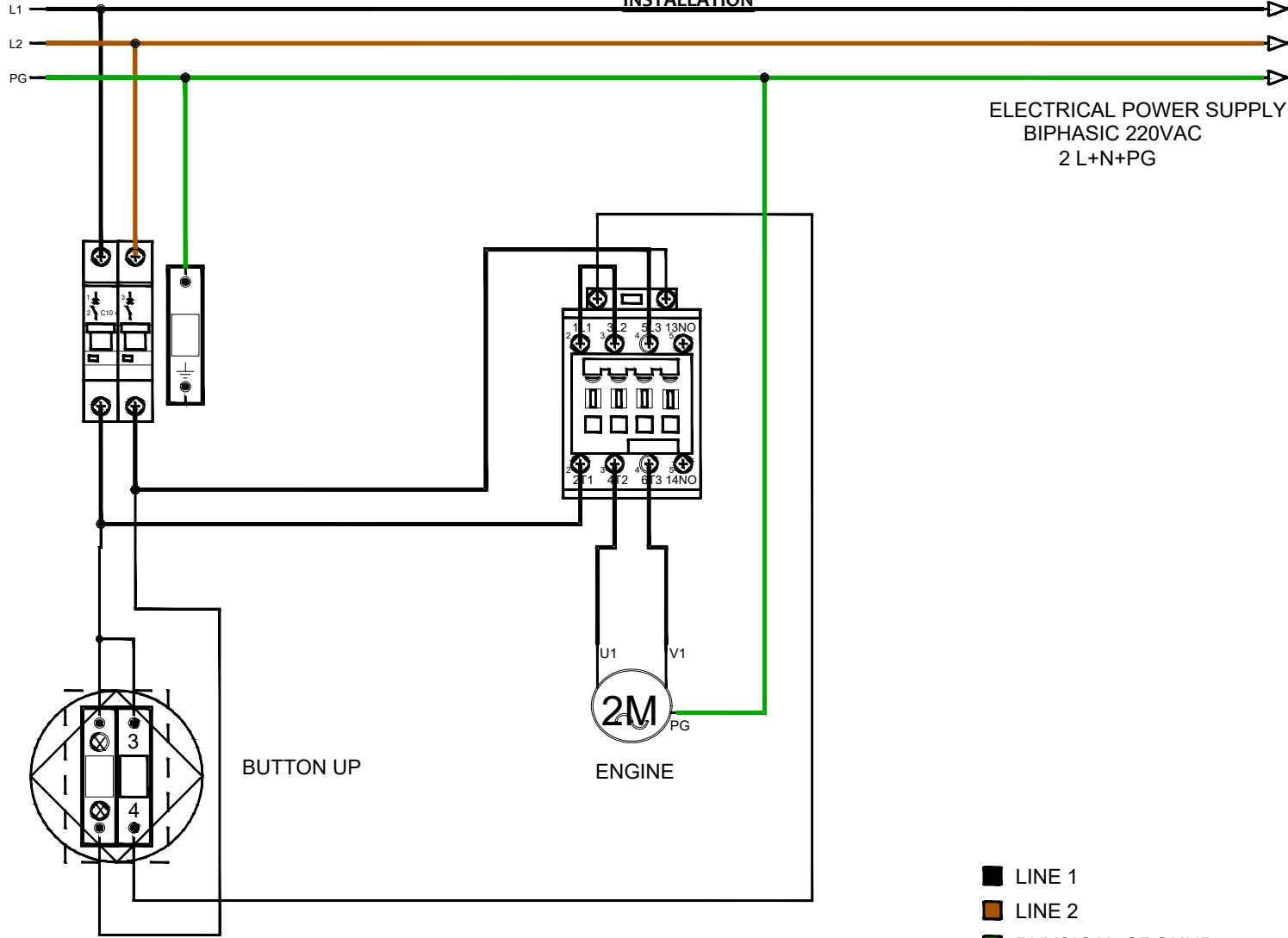
Design:	Reviewed:	Approved:	Date:
A. Gonzalez	G. Resendiz	G. Resendiz	30/06/2022

Dimensional unit	Geometric Tolerances	Standard drawing	Projection
Millimeters	Reference Table of Tolerances		

Name of equipment:	HYDRAULIC DOCK LEVELER
Capacity:	LEVELER FOR 30,000-40,000-50,000 LBS

HYDRAULIC DOCK LEVELER

DIAGRAM FOR ELECTRICAL INSTALLATION



- LINE 1
- LINE 2
- PHYSICAL GROUND
- POWER STAGE
- COMMAND CONTROL

COMMENTS ON THE EQUIPMENT

PARTS LIST		
Item	Description	Qty
1		
2		
3		

MODIFICATIONS			
Rev.	Request	Description	Date
1	Engineering	Issuance for Production	30/06/2022
2	-----	-----	-----
3	-----	-----	-----
4	-----	-----	-----

Tolerances Table:		REMARKS
xxxx ± 2mm		
xxx ± 2mm		
xx ± 1mm		
x ± 1mm		
∠ ± 1°		
∅ xxx ± 2mm		WEIGHT:
∅ xxx ± 2mm		
∅ xx ± 0.5mm		
∅ x ± 0.2mm		

Design:	Reviewed:	Approved:	Date:
A. Gonzalez	G. Resendiz	G. Resendiz	30/06/2022

Dimensional unit	Geometric Tolerances	Standard drawing	Projection
Millimeters	Reference Table of Tolerances		⊕ □

Name of equipment:	HYDRAULIC DOCK LEVELER
Capacity:	LEVELER FOR 30,000-40,000-50,000 LBS