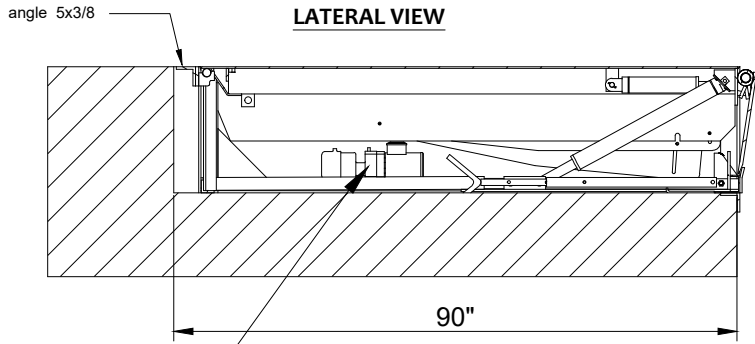
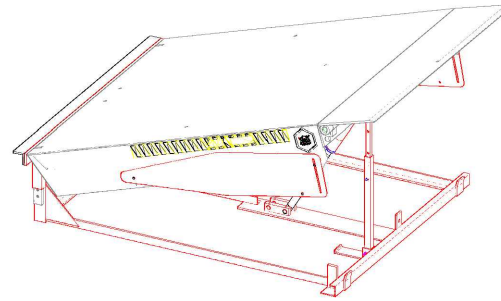


# HYDRAULIC DOCK LEVELER



The location of the hydraulic unit is inside the same pit where the ramp is located.

**ISOMETRIC VIEW**



**COMMENTS ON THE EQUIPMENT**

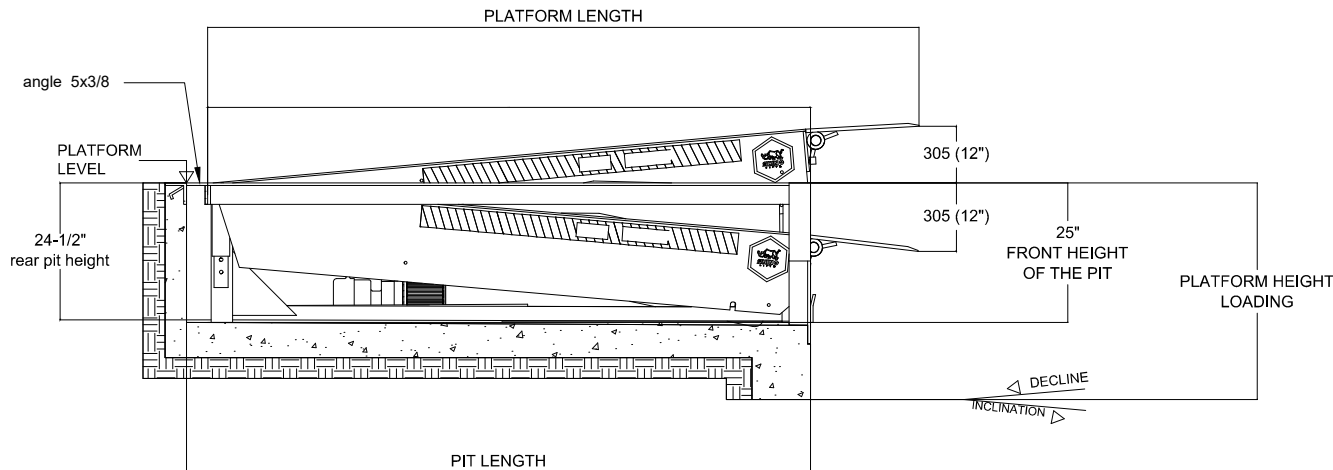
**PARTS LIST**

Item	Description	Qty
1	Mecanismo para cilindro	1
2	Mecanismo para plataforma	1
3	Baston de seguridad para plataforma	2

**MODIFICATIONS**

Rev.	Request	Description	Date
1	Engineering	Issuance for Production	10/03/2023
2	-----	-----	-----
3	-----	-----	-----
4	-----	-----	-----

**LATERAL VIEW DETAIL**



Tolerances  
Table 1:  
xxxx ± 2mm  
xxx ± 2mm  
xx ± 1mm  
x ± 1mm  
∠ ± 1°  
∅ xxx ± 2mm  
∅ xxx ± 2mm  
∅ xx ± 0.5mm  
∅ x ± 0.2mm

**REMARKS**

TOLERANCE SUMS ARE NOT ALLOWED IN THE OVERALL DIMENSIONS.

WEIGHT:

Design:	Reviewed:	Approved:	Date:
A. Gonzalez	G. Resendiz	G. Resendiz	10/03/2023

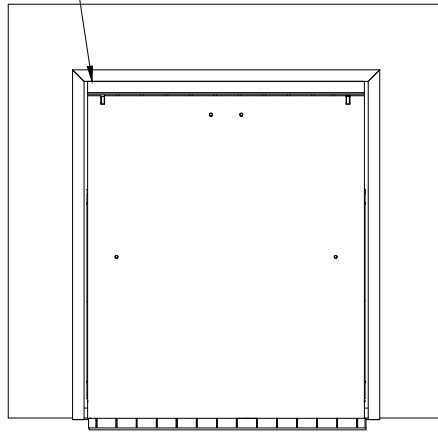
Dimensional unit	Geometric Tolerances	Standard drawing	Projection
Millimeters	Reference Table 1 of Tolerances		

Name of equipment:	HYDRAULIC DOCK LEVELER
Capacity:	LEVELER FOR 60,000

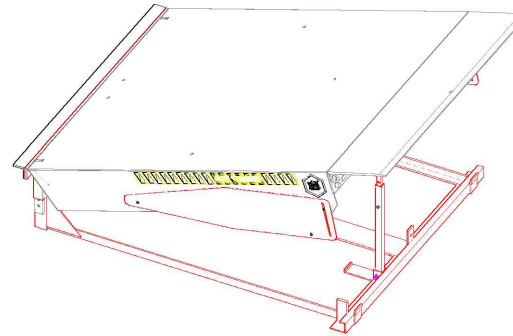
# HYDRAULIC DOCK LEVELER

angle 5x3/8

TOP VIEW



ISOMETRIC VIEW



COMMENTS ON THE EQUIPMENT

PARTS LIST

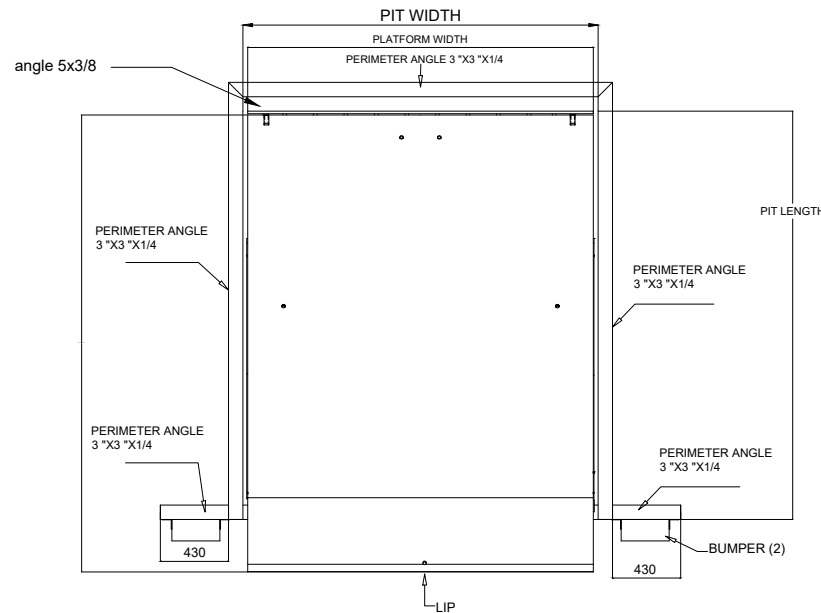
Item	Description	Qty
1		
2		
3		

MODIFICATIONS

Rev.	Request	Description	Date
1	Engineering	Issuance for Production	10/03/2023
2			
3			
4			

INSTALLATION DETAILS									
MODEL (Size)		PLATFORM DIMENSIONS				PIT SPECIFICATIONS			
		WIDTH		LENGTH		WIDTH		LENGTH	
mm	Ft	mm	inch	mm	inch	mm	inch	mm	inch
1829x2538	6'x 8'	1829	72"	2130	83-55/64"	1880	74"	2286	90"

TOP VIEW DETAIL



PERIMETER ANGLE 3 X 3 X 1/4  
(MATERIAL NOT SUPPLIED BY TECNORAMPA)

Tolerances

Table 1:  
xxxx ± 2mm  
xxx ± 2mm  
xx ± 1mm  
x ± 1mm  
∠ ± 1°  
∅ xxx ± 2mm  
∅ xxx ± 2mm  
∅ xx ± 0,5mm  
∅ x ± 0,2mm

REMARKS

TOLERANCE SUMS ARE NOT ALLOWED IN THE OVERALL DIMENSIONS.

WEIGHT:

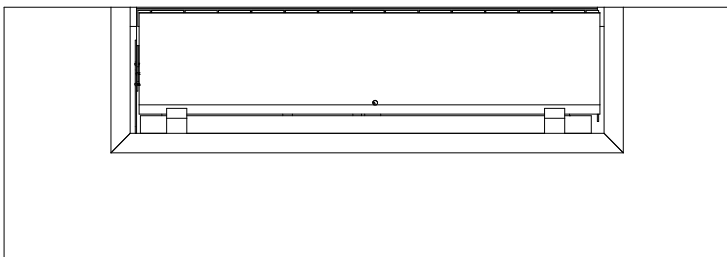
Design:	Reviewed:	Approved:	Date:
A. Gonzalez	G. Resendiz	G. Resendiz	10/03/2023

Dimensional unit	Geometric Tolerances	Standard drawing	Projection
Millimeters	Reference Table of Tolerances		

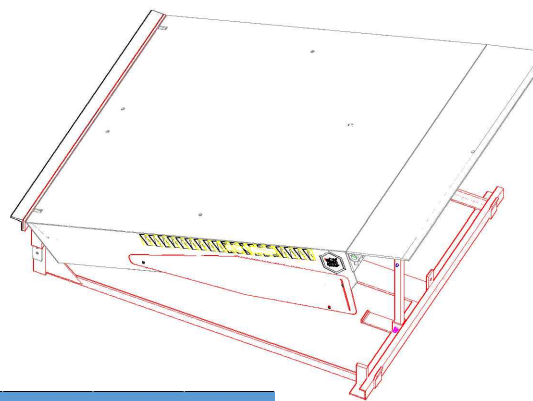
Name of equipment:	HYDRAULIC DOCK LEVELER
Capacity:	LEVELER FOR 60,000

# HYDRAULIC DOCK LEVELER

**FRONT VIEW**



**ISOMETRIC VIEW**



**INSTALLATION DETAILS**

MODEL (Size)		PLATFORM DIMENSIONS				PIT SPECIFICATIONS			
		WIDTH		LENGTH		WIDTH		LENGTH	
mm	Ft	mm	Inch	mm	Inch	mm	Inch	mm	Inch
1829x2538	6"x 8'	1829	72"	2130	83-55/64"	1880	74"	2286	90"

**COMMENTS ON THE EQUIPMENT**

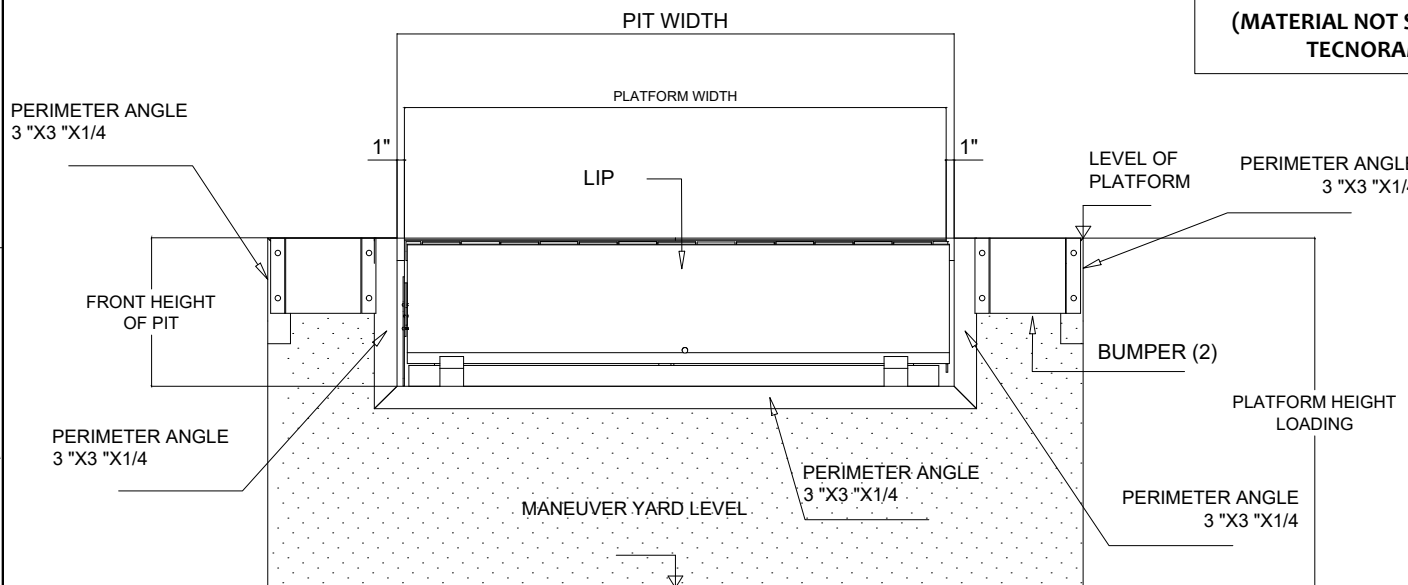
**PARTS LIST**

Item	Description	Qty
1		
2		
3		

**MODIFICATIONS**

Rev.	Request	Description	Date
1	Engineering	Issuance for Production	10/03/2023
2	-----	-----	-----
3	-----	-----	-----
4	-----	-----	-----

**FRONT VIEW DETAIL**



**PERIMETER ANGLE OF 3 X 3 X 1/4  
(MATERIAL NOT SUPPLIED BY TECNORAMPA)**

Tolerances  
Table 1:  
xxxx ± 2mm  
xxx ± 2mm  
xx ± 1mm  
x ± 1mm  
∠ ± 1°  
∅ xxx ± 2mm  
∅ xxx ± 2mm  
∅ xx ± 0,5mm  
x ± 0,2mm

**REMARKS**  
TOLERANCE SUMS ARE NOT ALLOWED IN THE OVERALL DIMENSIONS.  
WEIGHT:

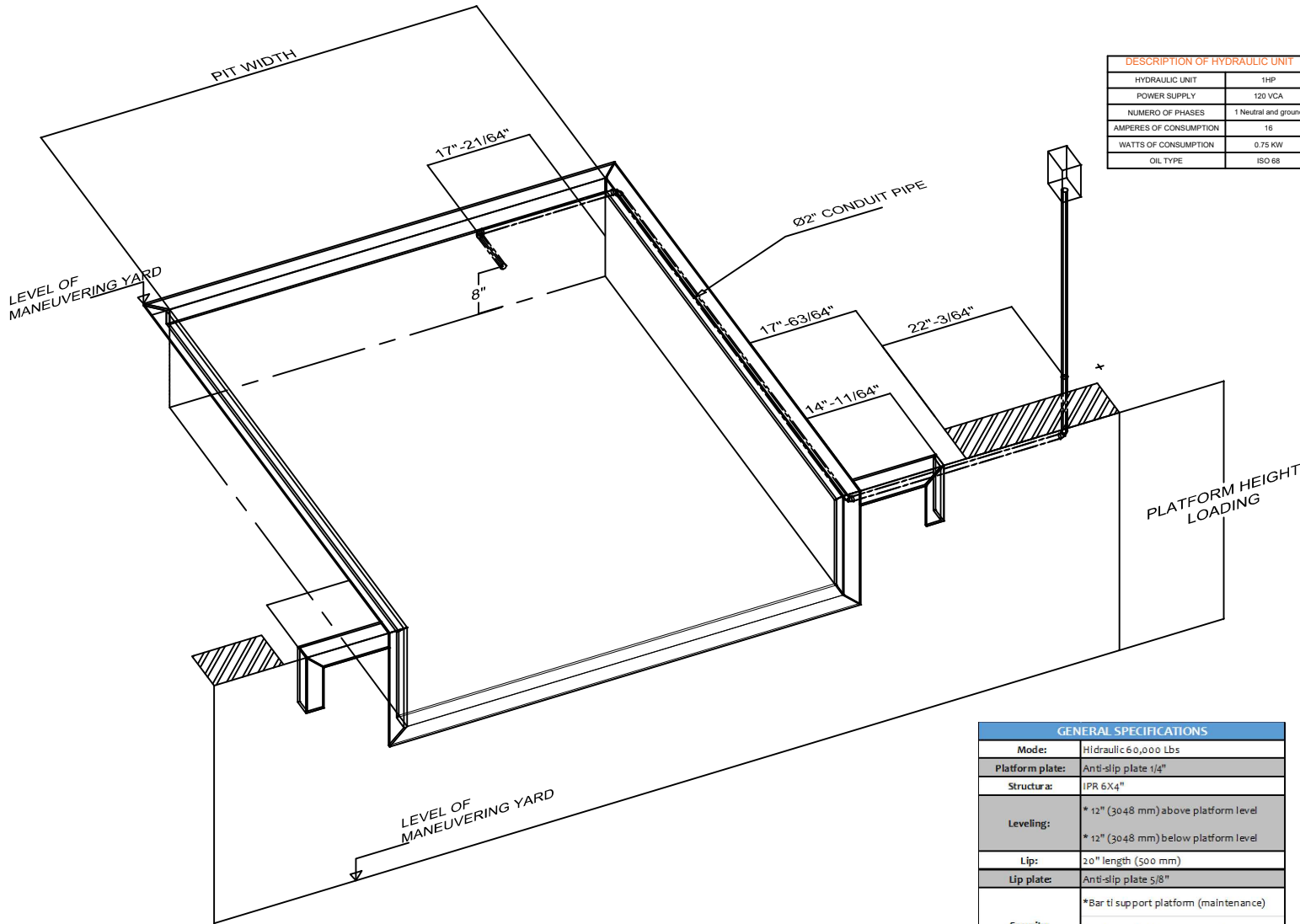
Design:	Reviewed:	Approved:	Date:
A. Gonzalez	G. Resendiz	G. Resendiz	10/03/2023

Dimensional unit	Geometric Tolerances	Standard drawing	Projection
Millimeters	Reference Table 1 of Tolerances		

Name of equipment:	HYDRAULIC DOCK LEVELER
Capacity:	LEVELER FOR 60,000

# DOCK LEVELLER HYDRAULIC

## ISOMETRIC VIEW PREPARATION TO INSTALL LEVELER



DESCRIPTION OF HYDRAULIC UNIT	
HYDRAULIC UNIT	1HP
POWER SUPPLY	120 VCA
NUMERO OF PHASES	1 Neutral and ground
AMPERES OF CONSUMPTION	16
WATTS OF CONSUMPTION	0.75 KW
OIL TYPE	ISO 68

COMMENTS ON THE EQUIPMENT

PARTS LIST		
Item	Description	Qty
1		
2		
3		

MODIFICATIONS			
Rev.	Request	Description	Date
1	Engineering	Issuance for Production	10/03/2023
2			
3			
4			

Tolerances Table:	
xxxx ± 2mm	
xxx ± 2mm	
xx ± 1mm	
x ± 1mm	
∠ ± 1°	
∅ xxxx ± 2mm	
∅ xxx ± 2mm	
∅ xx ± 0.5mm	
∅ x ± 0.2mm	

**REMARKS**  
TOLERANCE SUMS ARE NOT ALLOWED IN THE OVERALL DIMENSIONS.

GENERAL SPECIFICATIONS	
Mode:	Hydraulic 60,000 Lbs
Platform plate:	Anti-slip plate 1/4"
Structura:	I PR 6X4"
Leveling:	* 12" (3048 mm) above platform level * 12" (3048 mm) below platform level
Lip:	20" length (500 mm)
Lip plate:	Anti-slip plate 5/8"
Security:	*Bar ti support platform (maintenance) * Side guards (foot protectors) *Safety valve
Load capacity:	dimanic 60,000 lb (27,215 kg)
Finish:	Lead gray/yellow electrostatic painting

Design:	Reviewed:	Approved:	Date:
A. Gonzalez	G. Resendiz	G. Resendiz	10/03/2023

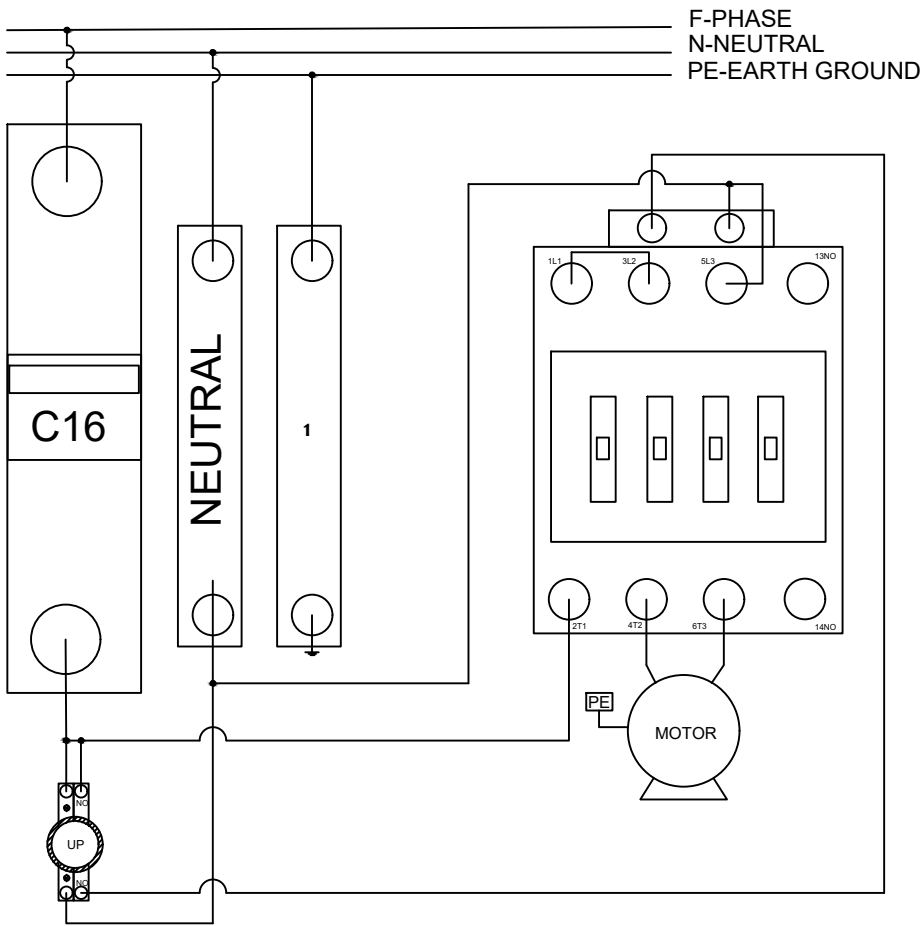
Dimensional unit	Geometric Tolerances	Standard drawing	Projection
Millimeters	Reference Table of Tolerances		

Name of equipment: HYDRAULIC DOCK LEVELER  
Capacity: LEVELER FOR 60,000

# HYDRAULIC DOCK LEVELER

## DIAGRAM FOR ELECTRICAL INSTALLATION

DOCK LEVELLER  
120VCA / 1HP



SINGLE-PHASE  
POWER SUPPLY  
120VCA  
F+N+PE

- PHASE
- NEUTRAL
- EARTH GROUND
- POWER AMPLIFIER

COMMENTS ON THE EQUIPMENT

PARTS LIST		
Item	Description	Qty
1		
2		
3		

MODIFICATIONS			
Rev.	Request	Description	Date
1	Engineering	Issuance for Production	10/03/2023
2	-----	-----	-----
3	-----	-----	-----
4	-----	-----	-----

Tolerances Table:		REMARKS
xxxx ± 2mm		
xxx ± 2mm		
xx ± 1mm		
x ± 1mm		
∠ ± 1°		
∅ xxxx ± 2mm		
∅ xxx ± 2mm		WEIGHT:
∅ xx ± 0.5mm		
∅ x ± 0.2mm		

Design:	Reviewed:	Approved:	Date:
A. Gonzalez	G. Resendiz	G. Resendiz	10/03/2023

Dimensional unit	Geometric Tolerances	Standard drawing	Projection
Millimeters	Reference Table of Tolerances		⊕ □

Name of equipment:	HYDRAULIC DOCK LEVELER
Capacity:	LEVELER FOR 60,000