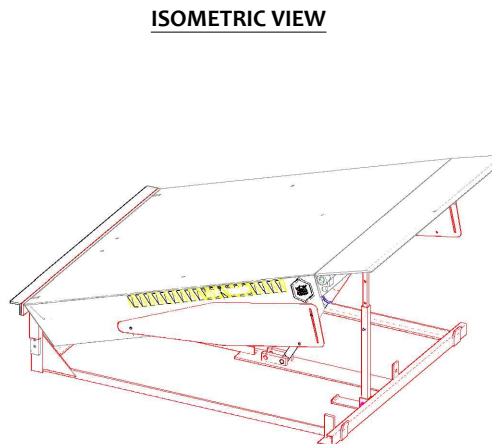
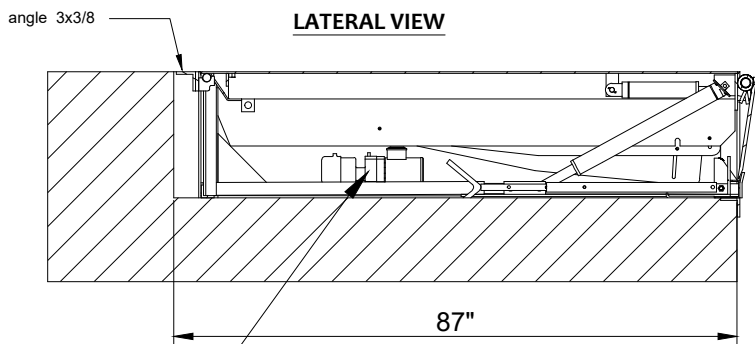
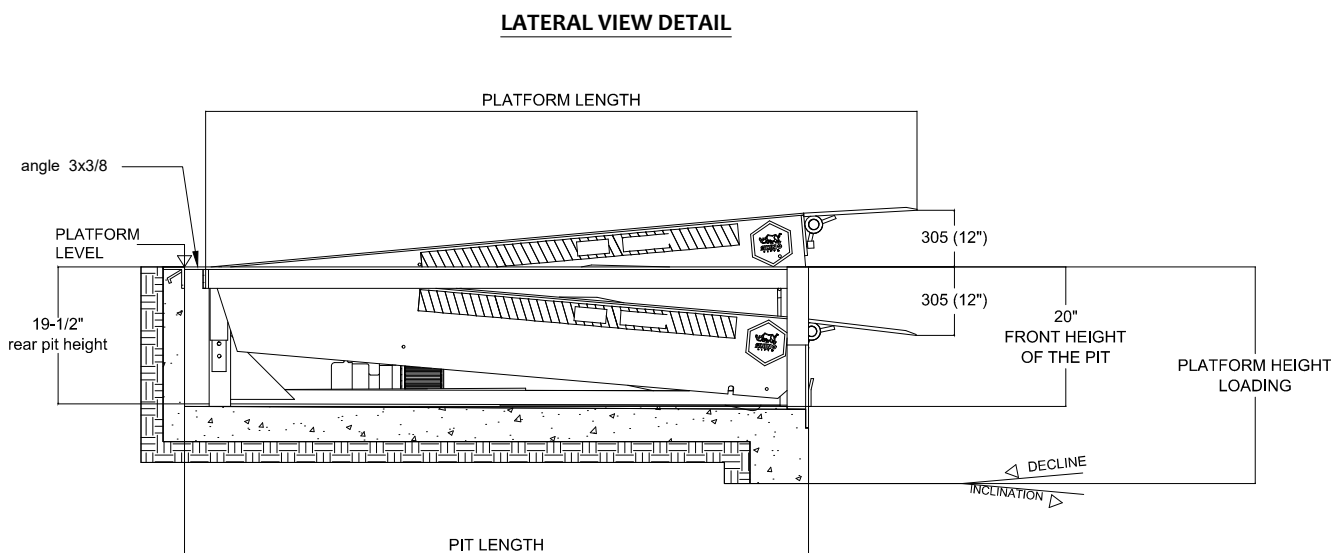
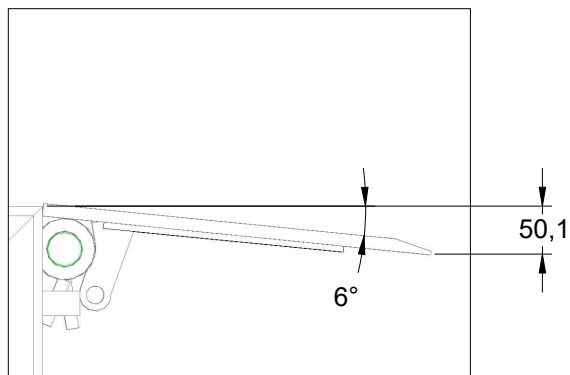


# HYDRAULIC DOCK LEVELER



The location of the hydraulic unit is inside the same pit where the ramp is located.



## COMMENTS ON THE EQUIPMENT

## PARTS LIST

Item	Description	Qty
1	Mecanismo para cilindro	1
2	Mecanismo para plataforma	1
3	Baston de seguridad para plataforma	2

## MODIFICATIONS

Rev.	Request	Description	Date
1	Engineering	Issuance for Production	08/05/2023
2	Dockzilla	no chamfer in the reinforcement plate and lip gussets need to be 3" wide	25/05/2023
3	-----	-----	-----
4	-----	-----	-----

Tolerances  
Table 1:  
xxxx ± 2mm  
xxx ± 2mm  
xx ± 1mm  
x ± 1mm  
∠ ± 1°  
∅ xxx ± 2mm  
∅ xxx ± 2mm  
∅ xx ± 0,5mm  
∅ x ± 0,2mm

## REMARKS

TOLERANCE SUMS ARE NOT ALLOWED IN THE OVERALL DIMENSIONS.

WEIGHT:

Design:	Reviewed:	Approved:	Date:
A. Gonzalez	G. Resendiz	G. Resendiz	08/05/2023

Dimensional unit	Geometric Tolerances	Standard drawing	Projection
Millimeters	Reference Table 1 of Tolerances		

Name of equipment: HYDRAULIC DOCK LEVELER

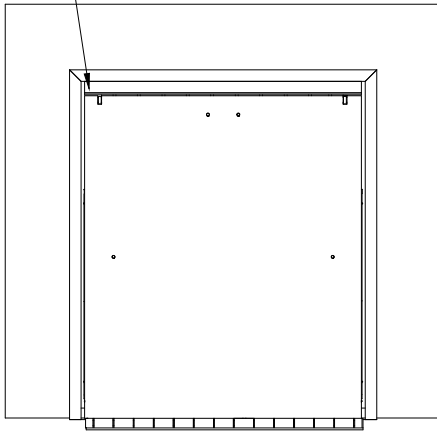
Capacity: LEVELER FOR 60,000 LBS

8X7 FT

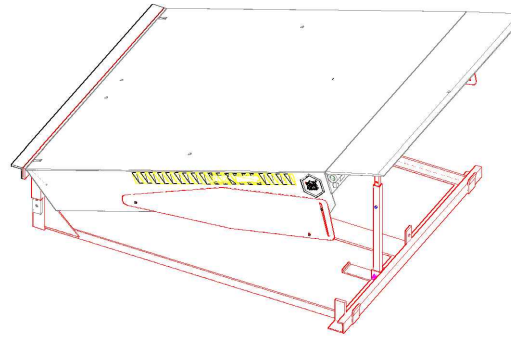
# HYDRAULIC DOCK LEVELER

angle 3x3/8

TOP VIEW



ISOMETRIC VIEW



COMMENTS ON THE EQUIPMENT

PARTS LIST

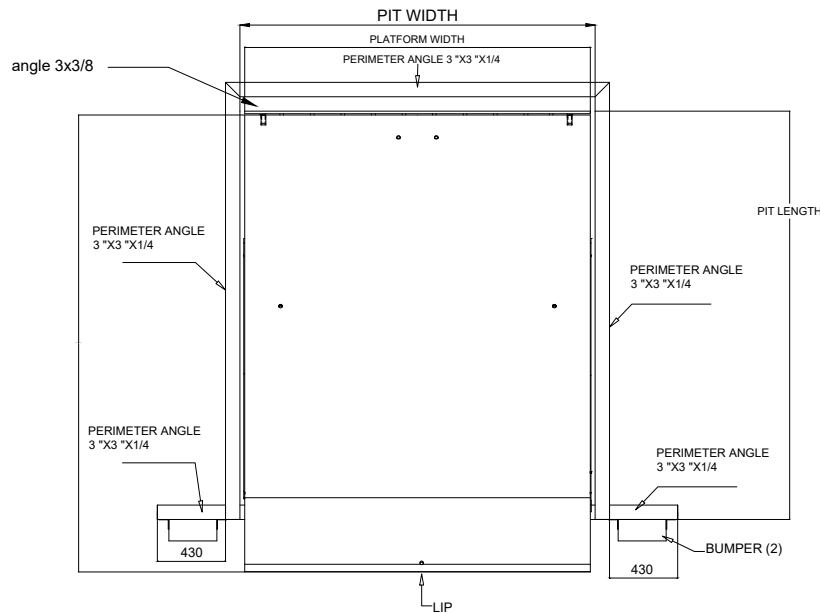
Item	Description	Qty
1		
2		
3		

MODIFICATIONS

Rev.	Request	Description	Date
1	Engineering	Issuance for Production	08/05/2023
2	Dockzilla	no chamfer in the reinforcement plate and lip gussets need to be 3" wide	25/05/2023
3	-----	-----	-----
4	-----	-----	-----

INSTALLATION DETAILS									
MODEL (Size)		PLATFORM DIMENSIONS				PIT SPECIFICATIONS			
		WIDTH		LENGTH		WIDTH		LENGTH	
mm	Ft	mm	inch	mm	inch	mm	inch	mm	inch
2108x1829	8'x 7'	2108	83"	2210	87"	2159	85"	2210	87"

TOP VIEW DETAIL



PERIMETER ANGLE 3 X 3 X 1/4  
(MATERIAL NOT SUPPLIED BY TECNORAMPA)

Tolerances		REMARKS
Table 1: xxxx ± 2mm xxx ± 2mm xx ± 1mm x ± 1mm ∠ ± 1°		
∅	xxxx ± 2mm	TOLERANCE SUMS ARE NOT ALLOWED IN THE OVERALL DIMENSIONS.
∅	xxx ± 2mm	
∅	xx ± 0,5mm	
∅	x ± 0,2mm	
WEIGHT:		

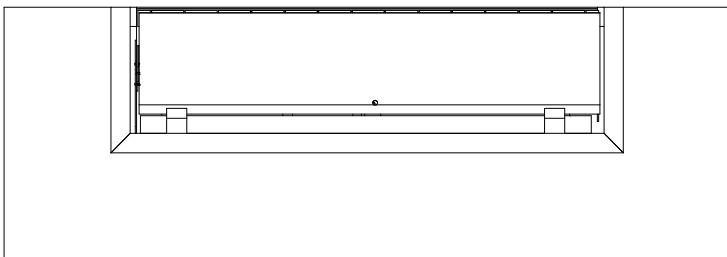
Design:	Reviewed:	Approved:	Date:
A. Gonzalez	G. Resendiz	G. Resendiz	08/05/2023

Dimensional unit	Geometric Tolerances	Standard drawing	Projection
Millimeters	Reference Table of Tolerances		

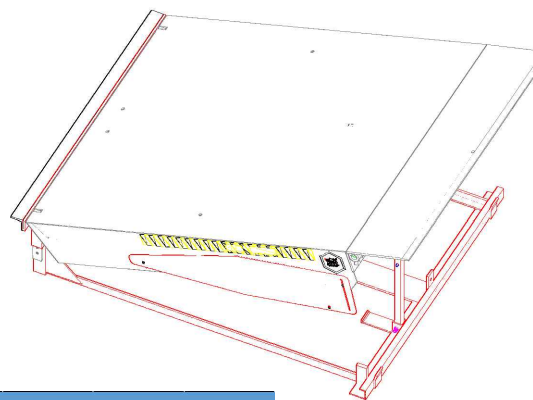
Name of equipment:	HYDRAULIC DOCK LEVELER
Capacity:	LEVELER FOR 60,000 LBS
	8X7 FT

# HYDRAULIC DOCK LEVELER

**FRONT VIEW**



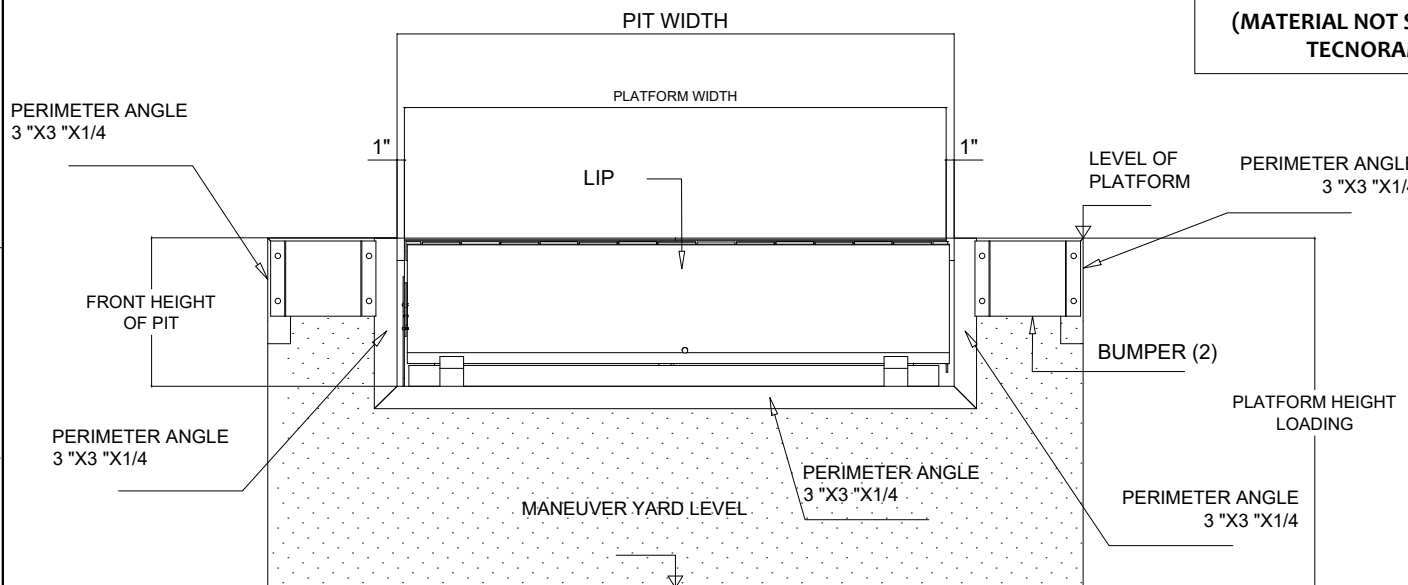
**ISOMETRIC VIEW**



**INSTALLATION DETAILS**

MODEL (Size)		PLATFORM DIMENSIONS				PIT SPECIFICATIONS			
		WIDTH		LENGTH		WIDTH		LENGTH	
mm	Ft	mm	inch	mm	inch	mm	inch	mm	inch
2108x2210	8'x 7'	2108	83"	2210	87"	2159	85"	2210	87"

**FRONT VIEW DETAIL**



**PERIMETER ANGLE OF 3 X 3 X 1/4  
(MATERIAL NOT SUPPLIED BY TECNORAMPA)**

**COMMENTS ON THE EQUIPMENT**

**PARTS LIST**

Item	Description	Qty
1		
2		
3		

**MODIFICATIONS**

Rev.	Request	Description	Date
1	Engineering	Issuance for Production	08/05/2023
2	Dockzilla	no chamfer in the reinforcement plate and lip gussets need to be 3" wide	25/05/2023
3	-----	-----	-----
4	-----	-----	-----

Tolerances  
Table 1:  
xxxx ± 2mm  
xxx ± 2mm  
xx ± 1mm  
x ± 1mm  
∠ ± 1°  
∅ xxx ± 2mm  
∅ xxx ± 2mm  
∅ xx ± 0.5mm  
x ± 0.2mm

**REMARKS**

TOLERANCE SUMS ARE NOT ALLOWED IN THE OVERALL DIMENSIONS.

WEIGHT:

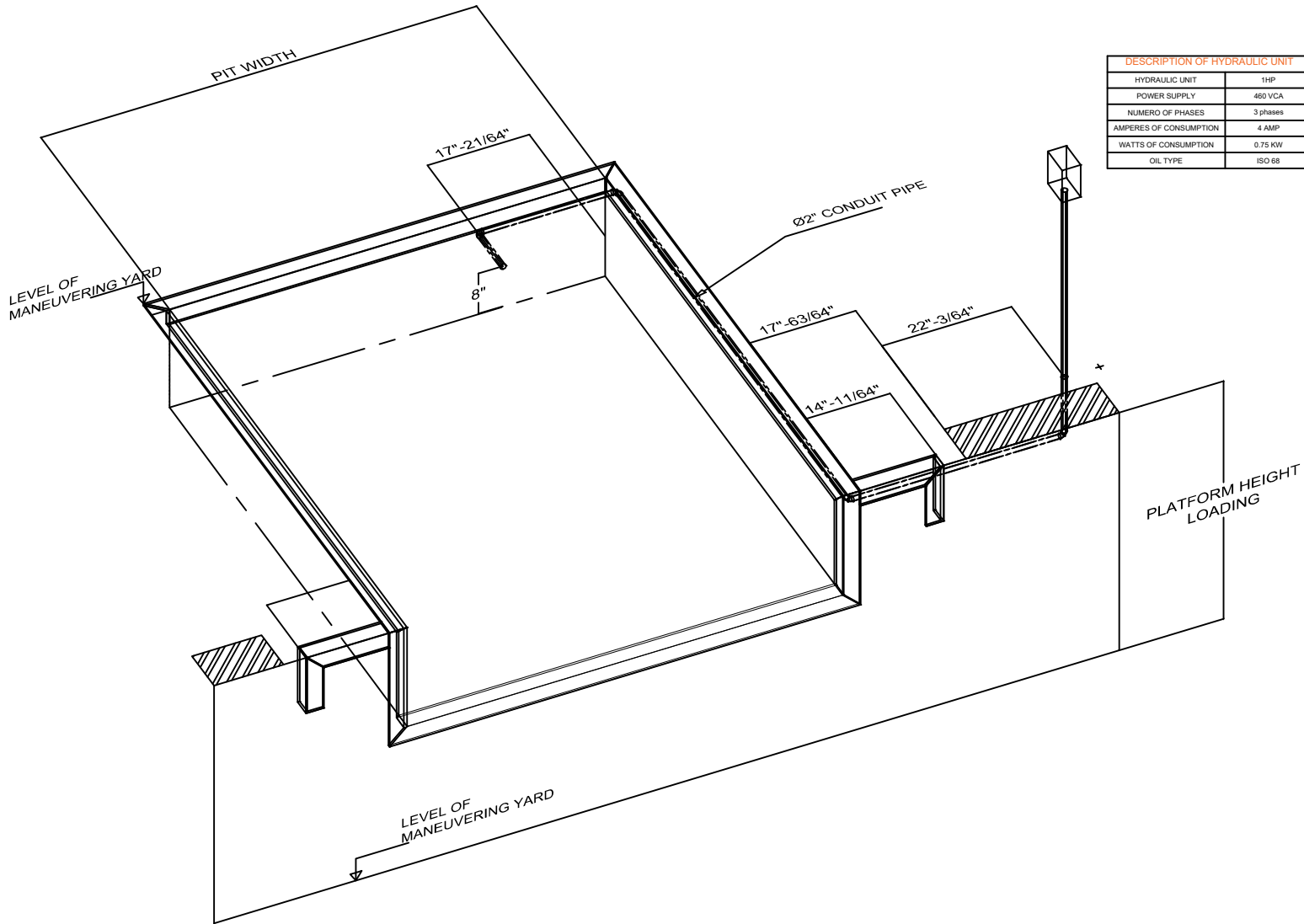
Design:	Reviewed:	Approved:	Date:
A. Gonzalez	G. Resendiz	G. Resendiz	08/05/2023

Dimensional unit	Geometric Tolerances	Standard drawing	Projection
Millimeters	Reference Table 1 of Tolerances		

Name of equipment:	HYDRAULIC DOCK LEVELER
Capacity:	LEVELER FOR 60,000 LBS
	8X7 FT

# DOCK LEVELLER HYDRAULIC

## ISOMETRIC VIEW PREPARATION TO INSTALL LEVELER



DESCRIPTION OF HYDRAULIC UNIT	
HYDRAULIC UNIT	1HP
POWER SUPPLY	460 VCA
NUMERO OF PHASES	3 phases
AMPERES OF CONSUMPTION	4 AMP
WATTS OF CONSUMPTION	0.75 KW
OIL TYPE	ISO 68

COMMENTS ON THE EQUIPMENT

PARTS LIST		
Item	Description	Qty
1		
2		
3		

MODIFICATIONS			
Rev.	Request	Description	Date
1	Engineering	Issuance for Production	08/05/2023
2	Dockzilla	no chamfer in the reinforcement plate and lip gussets need to be 3" wide	25/05/2023
3	-----	-----	-----
4	-----	-----	-----

Tolerances Table:  
 xxxx ± 2mm  
 xxx ± 2mm  
 xx ± 1mm  
 x ± 1mm  
 ∠ ± 1°  
 ∅ xxxx ± 2mm  
 ∅ xxx ± 2mm  
 ∅ xx ± 0.5mm  
 ∅ x ± 0.2mm

**REMARKS**  
 TOLERANCE SUMS ARE NOT ALLOWED IN THE OVERALL DIMENSIONS.

WEIGHT:

Design:	Reviewed:	Approved:	Date:
A. Gonzalez	G. Resendiz	G. Resendiz	08/05/2023

Dimensional unit	Geometric Tolerances	Standard drawing	Projection
Millimeters	Reference Table of Tolerances		

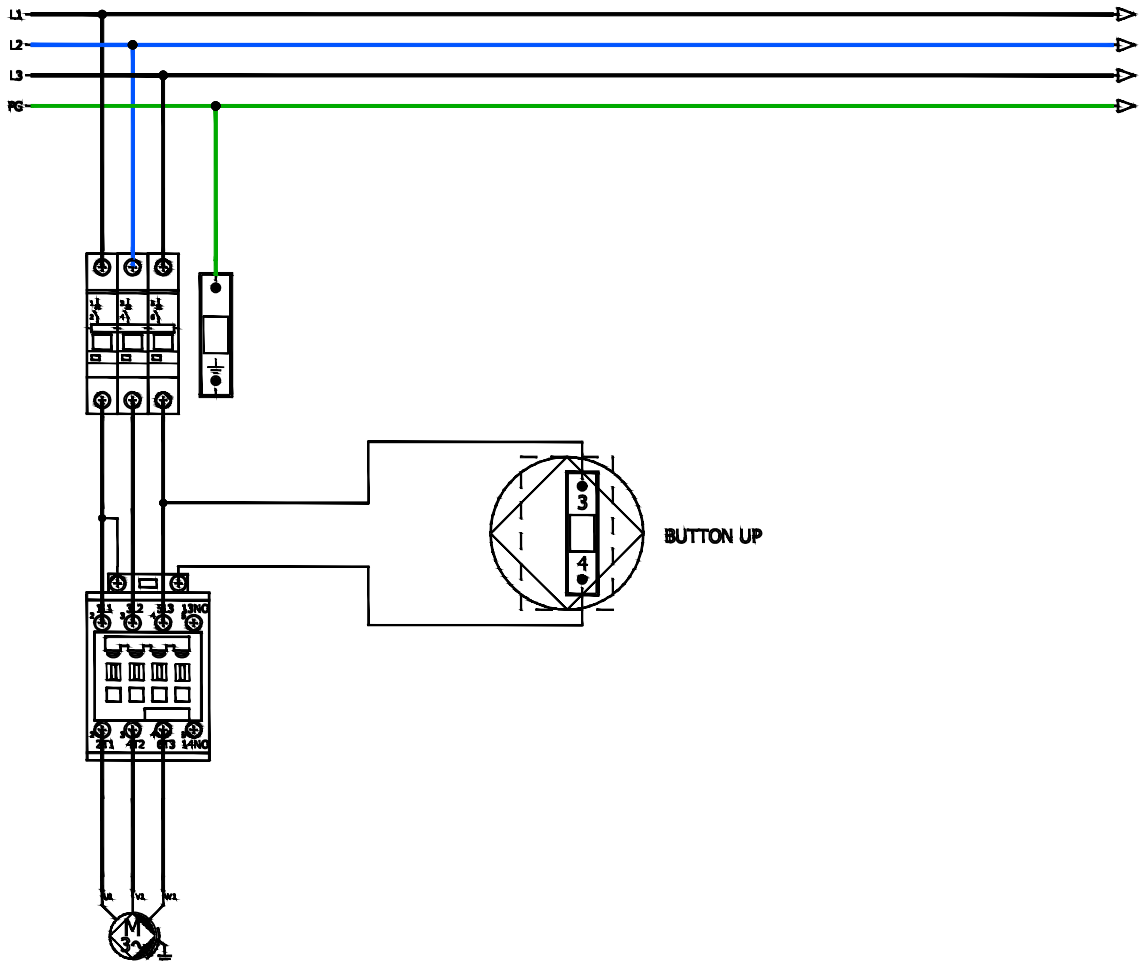
Name of equipment: HYDRAULIC DOCK LEVELER

Capacity: LEVELER FOR 60,000 LBS

**TecnoRampa** 8X7 FT

# HYDRAULIC DOCK LEVELER

## DIAGRAM FOR ELECTRICAL INSTALLATION



**ELECTRICAL POWER SUPPLY**  
TRIPHASIC 460 VAC

- LINE 1
- LINE 2
- LINE 3
- PHYSICAL GROUND
- POWER STAGE
- COMMAND CONTROL

COMMENTS ON THE EQUIPMENT

PARTS LIST		
Item	Description	Qty
1		
2		
3		

MODIFICATIONS			
Rev.	Request	Description	Date
1	Engineering	Issuance for Production	13/12/2022
2	-----	-----	-----
3	-----	-----	-----
4	-----	-----	-----

Tolerances Table:		REMARKS
xxxx ± 2mm	xxx ± 2mm	
xx ± 1mm	x ± 1mm	
∠ ± 1°		
∅ xxxx ± 2mm	∅ xxx ± 2mm	
∅ xx ± 0.5mm	∅ x ± 0.2mm	
WEIGHT:		

Design:	Reviewed:	Approved:	Date:
A. Gonzalez	G. Resendiz	G. Resendiz	13/12/2022

Dimensional unit	Geometric Tolerances	Standard drawing	Projection
Millimeters	Reference Table of Tolerances		

Name of equipment: HYDRAULIC DOCK LEVELER

Capacity: