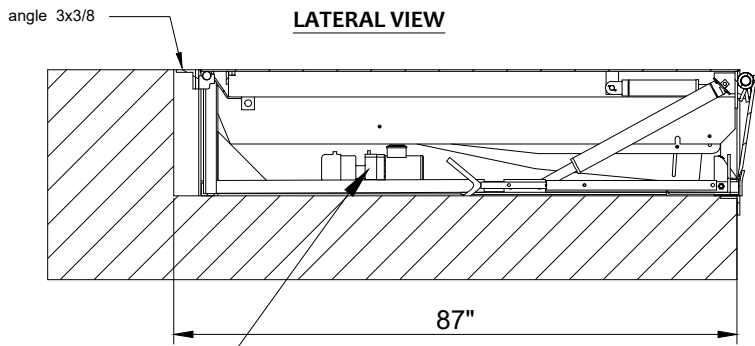
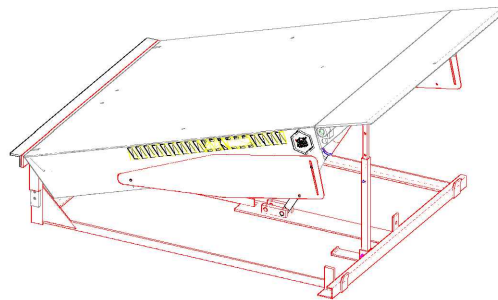


HYDRAULIC DOCK LEVELER



ISOMETRIC VIEW



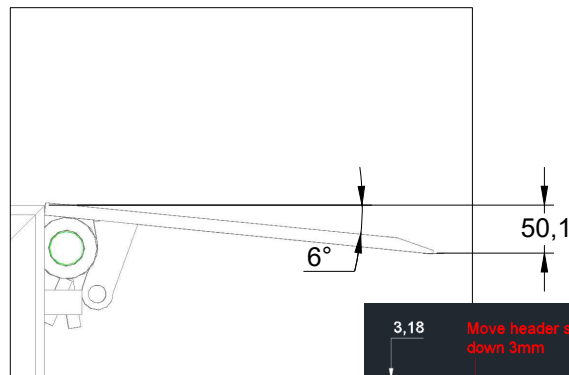
The location of the hydraulic unit is inside the same pit where the ramp is located.

Approved with change noted.

Eric Demerath 5-23-23

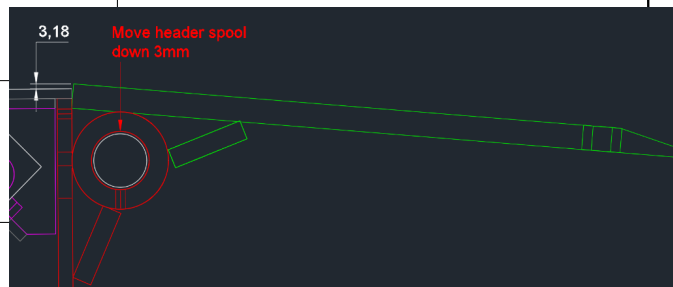
Model reviewed by Dockzilla.
"MODELO NH 8X7 30K L16 especial.DWG"

https://dockzilla.sharepoint.com/:u:/s/Engineering/ES0-CsaIBxRMqvFjPGp83Y4BrQ2odXP6qJ3Bv_plvJbrFQ?e=6BQQNf



LATERAL VIEW DETAIL

PLATFORM LENGTH



COMMENTS ON THE EQUIPMENT

PARTS LIST

Item	Description	Qty
1	Mecanismo para cilindro	1
2	Mecanismo para plataforma	1
3	Baston de seguridad para plataforma	2

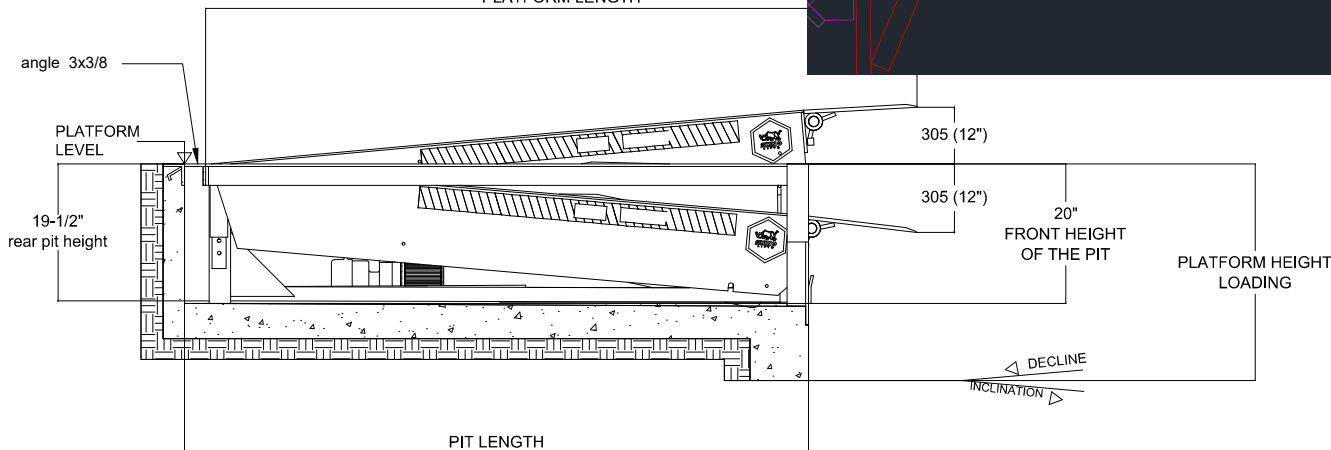
MODIFICATIONS

Rev.	Request	Description	Date
1	Engineering	Issuance for Production	08/05/2023
2			

REMARKS

TOLERANCE SUMS ARE NOT ALLOWED IN THE OVERALL DIMENSIONS.

WEIGHT:



Design:	Reviewed:	Approved:	Date:
A. Gonzalez	G. Resendiz	G. Resendiz	08/05/2023

Dimensional unit	Geometric Tolerances	Standard drawing	Projection
Millimeters	Reference Table 1 of Tolerances		

Name of equipment: HYDRAULIC DOCK LEVELER

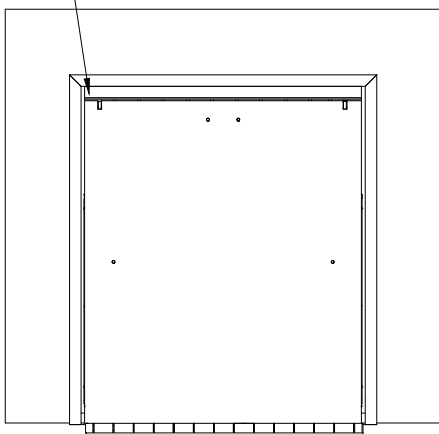
Capacity: LEVELER FOR 30,000 LBS

TecnoRampa 8X7 FT

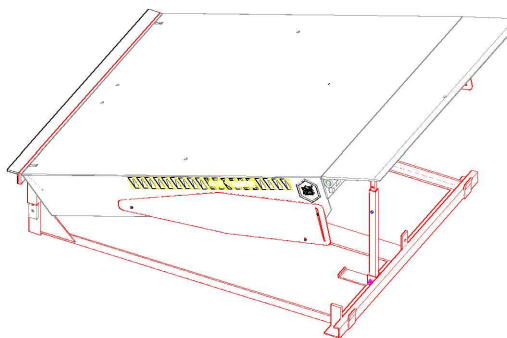
HYDRAULIC DOCK LEVELER

angle 3x3/8

TOP VIEW



ISOMETRIC VIEW



COMMENTS ON THE EQUIPMENT

PARTS LIST

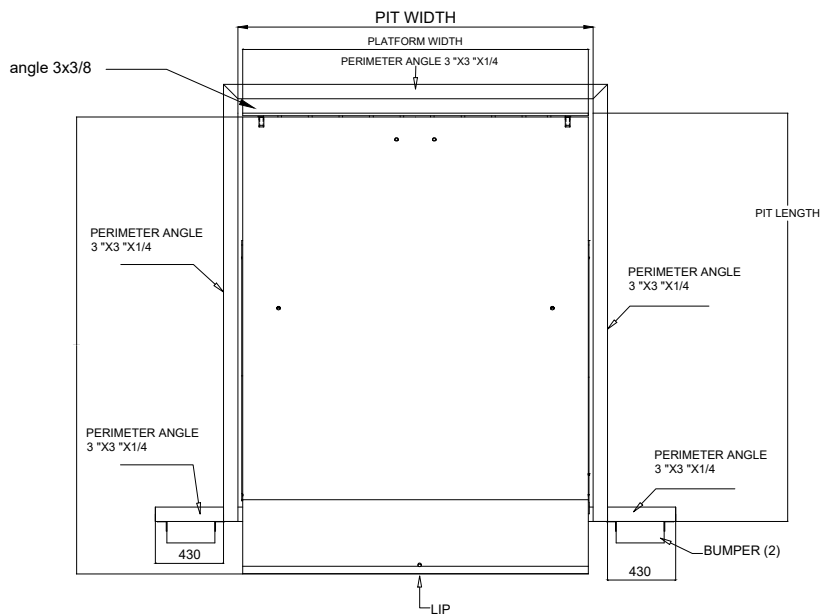
Item	Description	Qty
1		
2		
3		

MODIFICATIONS

Rev.	Request	Description	Date
1	Engineering	Issuance for Production	08/05/2023
2			
3			
4			

INSTALLATION DETAILS									
MODEL (Size)		PLATFORM DIMENSIONS				PIT SPECIFICATIONS			
		WIDTH		LENGTH		WIDTH		LENGTH	
mm	Ft	mm	inch	mm	inch	mm	inch	mm	inch
2108x1829	8'x 7'	2108	83"	2210	87"	2159	85"	2210	87"

TOP VIEW DETAIL



PERIMETER ANGLE 3 X 3 X 1/4
(MATERIAL NOT SUPPLIED BY TECNORAMPA)

Tolerances
Table 1:
xxxx ± 2mm
xxx ± 2mm
xx ± 1mm
x ± 1mm
∠ ± 1°
∅ xxx ± 2mm
∅ xxx ± 2mm
∅ xx ± 0.5mm
∅ x ± 0.2mm

REMARKS
TOLERANCE SUMS ARE NOT ALLOWED IN THE OVERALL DIMENSIONS.
WEIGHT:

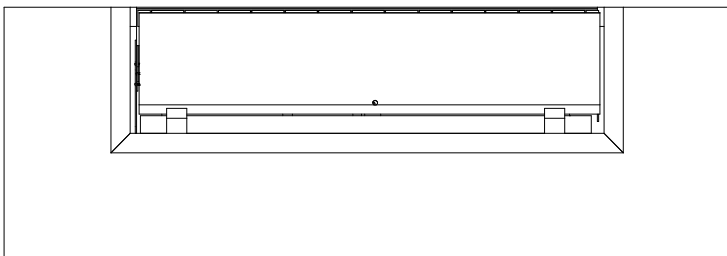
Design:	Reviewed:	Approved:	Date:
A. Gonzalez	G. Resendiz	G. Resendiz	08/05/2023

Dimensional unit	Geometric Tolerances	Standard drawing	Projection
Millimeters	Reference Table of Tolerances		

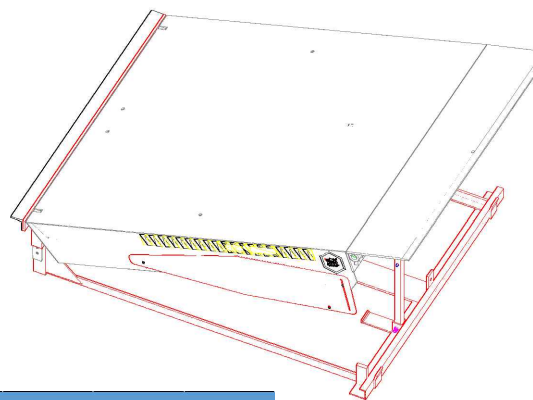
Name of equipment:	HYDRAULIC DOCK LEVELER
Capacity:	LEVELER FOR 30,000 LBS
	8X7 FT

HYDRAULIC DOCK LEVELER

FRONT VIEW

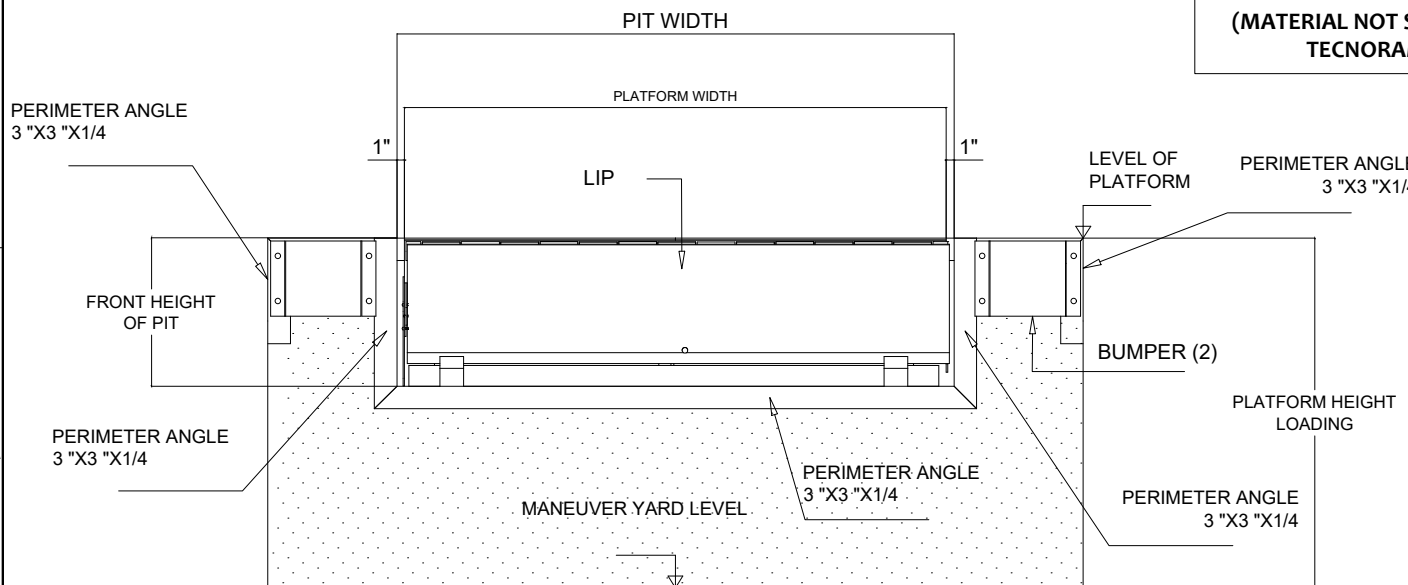


ISOMETRIC VIEW



INSTALLATION DETAILS									
MODEL (Size)		PLATFORM DIMENSIONS				PIT SPECIFICATIONS			
		WIDTH		LENGTH		WIDTH		LENGTH	
mm	Ft	mm	inch	mm	inch	mm	inch	mm	inch
2108x2210	8'x 7'	2108	83"	2210	87"	2159	85"	2210	87"

FRONT VIEW DETAIL



**PERIMETER ANGLE OF 3 X 3 X 1/4
(MATERIAL NOT SUPPLIED BY TECNORAMPA)**

Item	Description	Qty
1		
2		
3		

Rev.	Request	Description	Date
1	Engineering	Issuance for Production	08/05/2023
2	-----	-----	-----
3	-----	-----	-----
4	-----	-----	-----

Rev.	Request	Description	Date
1	Engineering	Issuance for Production	08/05/2023
2	-----	-----	-----
3	-----	-----	-----
4	-----	-----	-----

Tolerances	REMARKS
Table 1: xxxx ± 2mm xxx ± 2mm xx ± 1mm x ± 1mm ∠ ± 1°	TOLERANCE SUMS ARE NOT ALLOWED IN THE OVERALL DIMENSIONS.
Ø xxxx ± 2mm Ø xxx ± 2mm Ø xx ± 0.5mm x ± 0.2mm	WEIGHT:

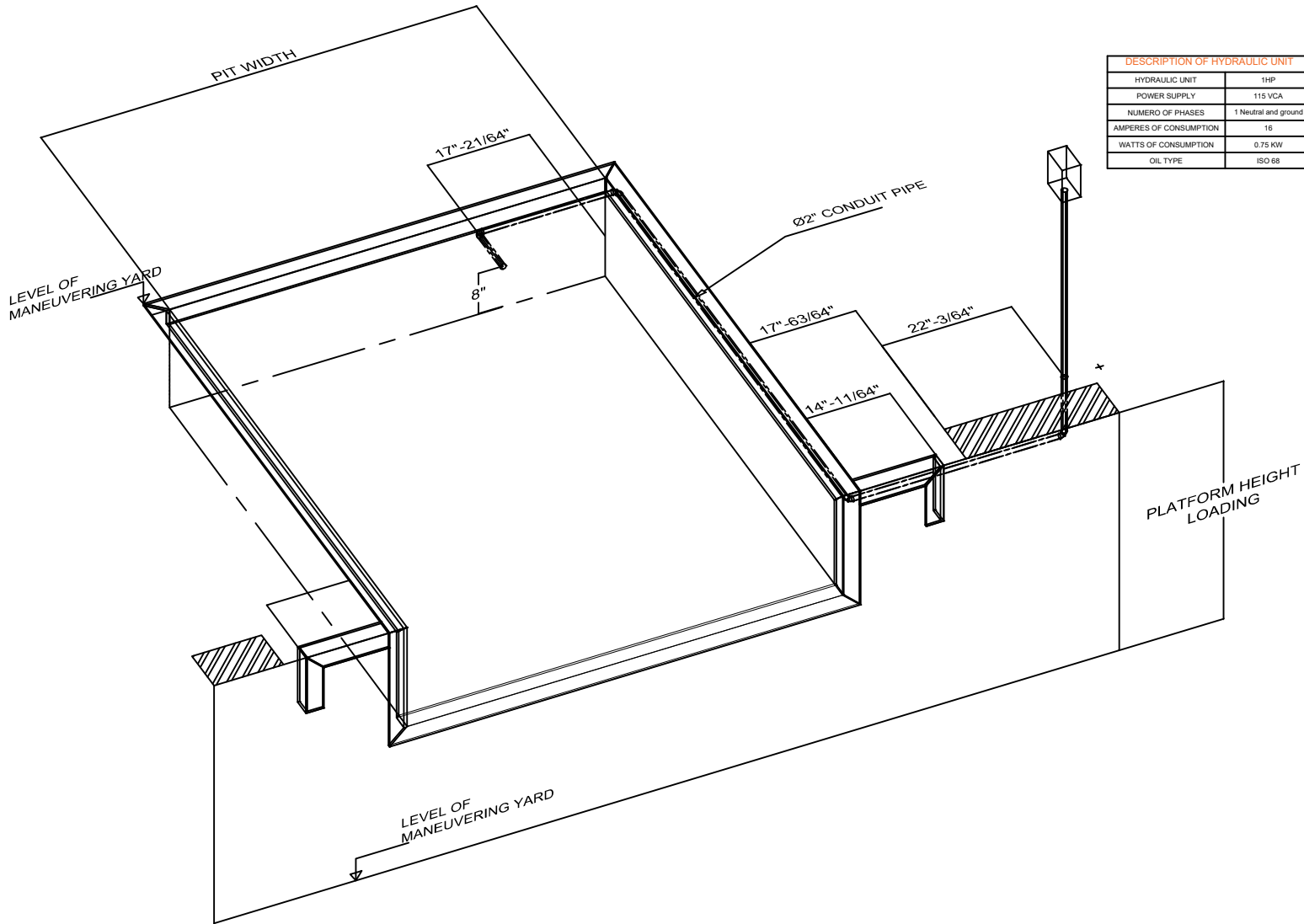
Design:	Reviewed:	Approved:	Date:
A. Gonzalez	G. Resendiz	G. Resendiz	08/05/2023

Dimensional unit	Geometric Tolerances	Standard drawing	Projection
Millimeters	Reference Table 1 of Tolerances		⊕ - □

Name of equipment:	HYDRAULIC DOCK LEVELER
Capacity:	LEVELER FOR 30,000 LBS
Tecnorampa	8X7 FT

DOCK LEVELLER HYDRAULIC

ISOMETRIC VIEW PREPARATION TO INSTALL LEVELER



DESCRIPTION OF HYDRAULIC UNIT	
HYDRAULIC UNIT	1HP
POWER SUPPLY	115 VCA
NUMERO OF PHASES	1 Neutral and ground
AMPERES OF CONSUMPTION	16
WATTS OF CONSUMPTION	0.75 KW
OIL TYPE	ISO 68

COMMENTS ON THE EQUIPMENT

PARTS LIST		
Item	Description	Qty
1		
2		
3		

MODIFICATIONS			
Rev.	Request	Description	Date
1	Engineering	Issuance for Production	08/05/2023
2			
3			
4			

Tolerances Table:		REMARKS
xxxx ± 2mm		
xxx ± 2mm		
xx ± 1mm		
x ± 1mm		
∠ ± 1°		
∅ xxxx ± 2mm		
∅ xxx ± 2mm		WEIGHT:
∅ xx ± 0.5mm		
∅ x ± 0.2mm		

Design:	Reviewed:	Approved:	Date:
A. Gonzalez	G. Resendiz	G. Resendiz	08/05/2023

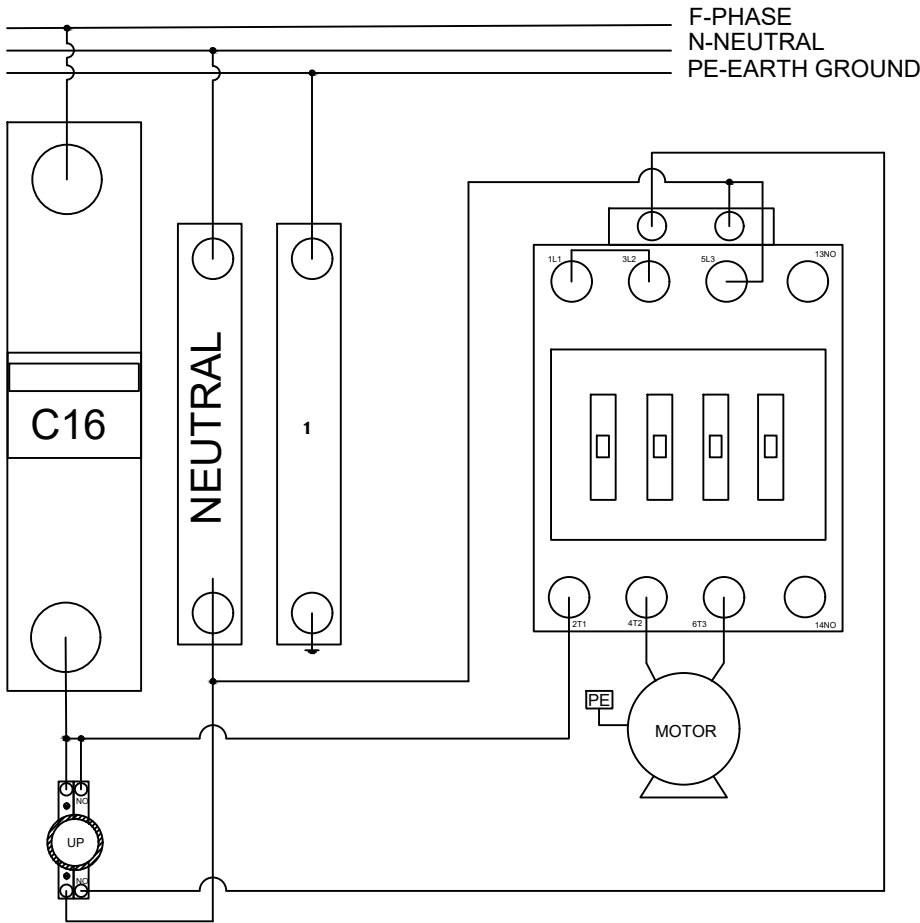
Dimensional unit	Geometric Tolerances	Standard drawing	Projection
Millimeters	Reference Table of Tolerances		

Name of equipment:	HYDRAULIC DOCK LEVELER
Capacity:	LEVELER FOR 30,000 LBS
	8X7 FT

HYDRAULIC DOCK LEVELER

DIAGRAM FOR ELECTRICAL INSTALLATION

DOCK LEVELLER
110VCA / 1HP



SINGLE-PHASE
POWER SUPPLY
115VCA
F+N+PE

- PHASE
- NEUTRAL
- EARTH GROUND
- POWER AMPLIFIER

COMMENTS ON THE EQUIPMENT

PARTS LIST		
Item	Description	Qty
1		
2		
3		

MODIFICATIONS			
Rev.	Request	Description	Date
1	Engineering	Issuance for Production	08/05/2023
2	-----	-----	-----
3	-----	-----	-----
4	-----	-----	-----

Tolerances Table:		REMARKS TOLERANCE SUMS ARE NOT ALLOWED IN THE OVERALL DIMENSIONS.
xxxx ± 2mm		
xxx ± 2mm		
xx ± 1mm		
x ± 1mm		
∠ ± 1°		
∅ xxxx ± 2mm		
∅ xxx ± 2mm		
∅ xx ± 0.5mm		
∅ x ± 0.2mm		
WEIGHT:		

Design:	Reviewed:	Approved:	Date:
A. Gonzalez	G. Resendiz	G. Resendiz	08/05/2023

Dimensional unit	Geometric Tolerances	Standard drawing	Projection
Millimeters	Reference Table of Tolerances		

Name of equipment:	HYDRAULIC DOCK LEVELER
Capacity:	LEVELER FOR 30,000 LBS
	8X7 FT