

<b>CAMERON ENGINEERING SHOP DRAWING REVIEW FORM</b>	
<b>PROJECT NAME:</b> 2976 3rd Ave	<b>CE JOB NUMBER:</b> 21166
<b>SUBMITTAL ID:</b> 142100-1	
<b>DESCRIPTION:</b> Car Lift - VOX Elevator	
<b>OTHER:</b>	

APPROVAL IS ONLY FOR CONFORMANCE WITH THE DESIGN CONCEPT OF THE PROJECT AND COMPLIANCE WITH THE INFORMATION GIVEN IN THE CONTRACT DOCUMENTS. CONTRACTOR IS RESPONSIBLE FOR CONFIRMING AND CORRELATING ALL DIMENSIONS AT THE JOB SITE; FOR OPERATIONS THAT PERTAIN TO THE FABRICATION PROCESSES OR TO TECHNIQUES OF CONSTRUCTION AND FOR COORDINATION OF THE WORK OF ALL TRADES.

NO EXCEPTIONS TAKEN:

REVIEWED W/ CHANGES NOTED:

REVISE & RESUBMIT:

REJECTED - RESUBMIT:

FOR RECORD ONLY:

Project #: 21166

Date: 11-06-2022

Reviewed by: JL / MP

**TRADE:**  
(SELECT ALL THAT APPLY)

MECHANICAL

ELECTRICAL

FIRE ALARM

FIRE PROTECTION

PLUMBING

STRUCTURAL

INFORMATION TECHNOLOGY

SECURITY

AUDIO-VISUAL

**COMMENTS:**

**Notes:**

1. Please provide the heat dissipation load from the hydraulic unit, elevator control panel and provide working environment requirement so the mechanical engineer could provide proper cooling and ventilation for these units.
2. Electrical contractor shall coordinate with manufacturer for recommended power requirements and locations.



**GENERAL NOTES**

1. THIS DRAWING IS THE PROPERTY OF PARKMATIC AND IT MAY NOT BE REPRODUCED IN WHOLE OR PART OR USED FOR THE MANUFACTURE OF ANY ARTICLE WITHOUT PRIOR WRITTEN CONSENT.
2. WORK TO FIGURE DIMENSIONS ONLY.
3. THIS DRAWING IS TO BE READ IN CONJUNCTION WITH ALL RELEVANT ARCHITECT'S AND ENGINEER'S DRAWINGS AND SPECIFICATIONS.

**# KEY NOTES**

REV	DESCRIPTION	DATE
4		
3		
2		
1		

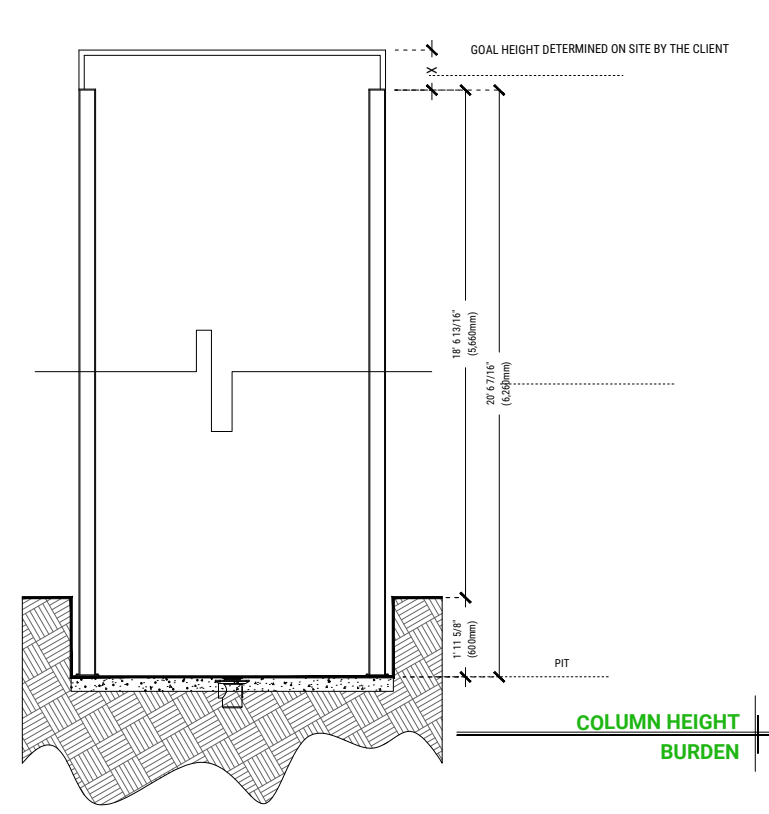
REV	DESCRIPTION	DATE

**PARKMATIC**  
 NEW YORK OFFICE, USA  
 75 PLANDOME RD, 2FL  
 MANHASSET, NY 11030  
 P: +1-800-422-5438  
 W: www.parkmatic.com

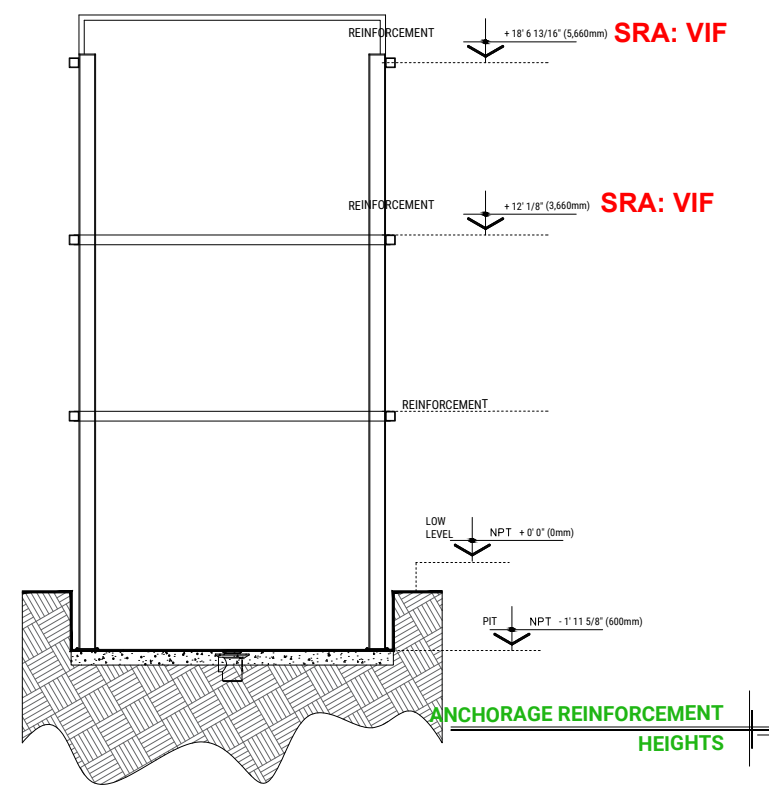
**CLIENT:** MJM ASSOCIATES CONSTRUCTION, LLC  
**SYSTEM:** VOX ELEVATOR  
**ADDRESS:** 2079 3RD AVE, THE BRONX, NY 10451

**TITLE:** EQUIPMENT DESCRIPTION

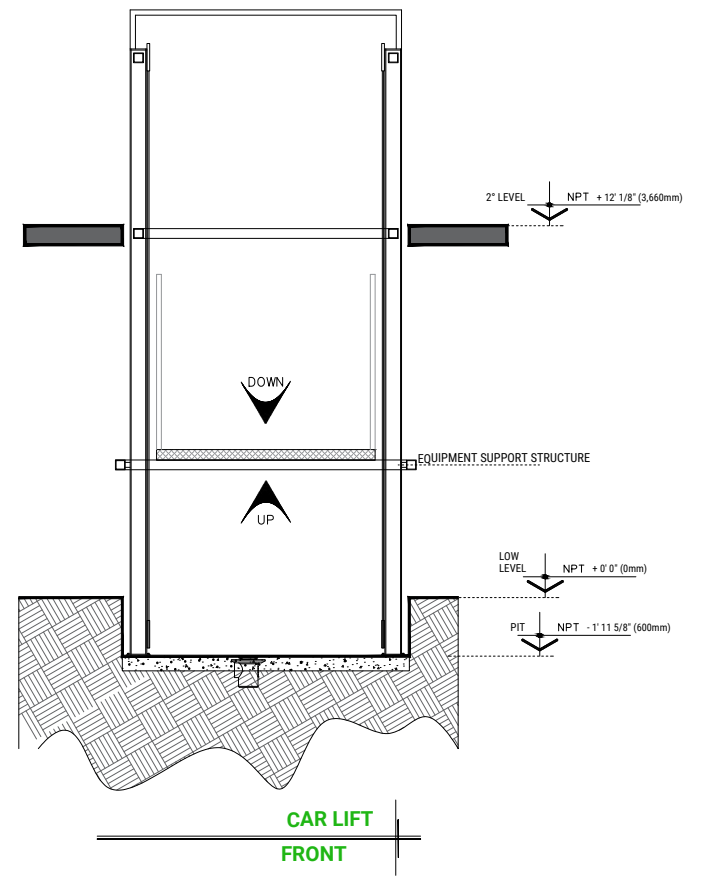
<b>SCALE:</b> N/A	<b>DATE:</b> 08/23/2022	<b>DRAWN:</b> SR	<b>CHECKED:</b> MW
<b>DRAWING NO.:</b> BX-VE-01		<b>SHEET:</b> 02 OF 05	



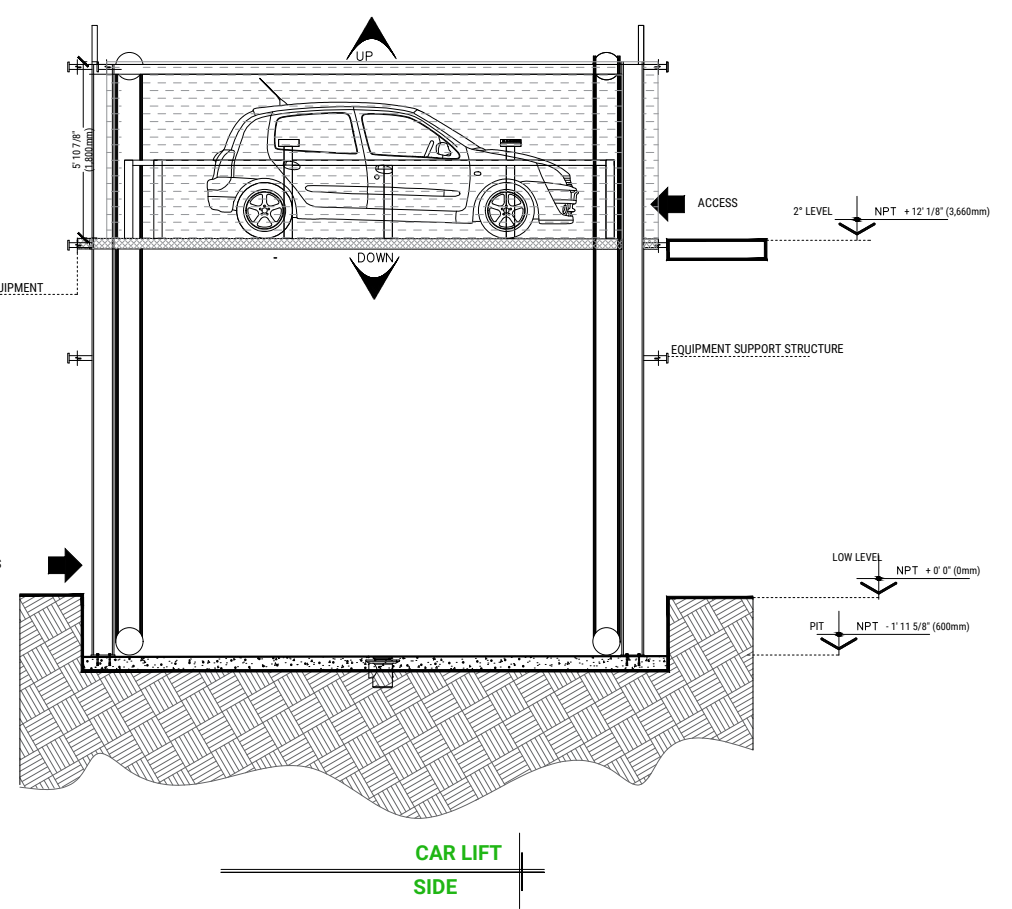
**COLUMN HEIGHT BURDEN**



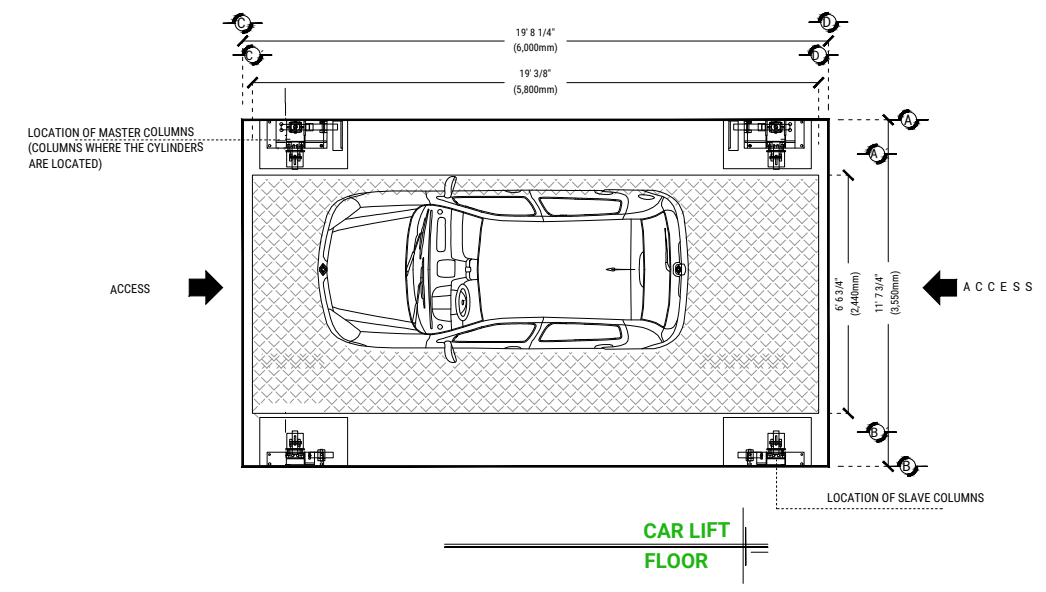
**ANCHORAGE REINFORCEMENT HEIGHTS**



**CAR LIFT FRONT**



**CAR LIFT SIDE**



**CAR LIFT FLOOR**

## HYDRAULIC UNIT

FOR THE OPERATION OF THE ELEVATOR, A HYDRAULIC UNIT IS NECESSARY, WHICH IS NOT CONTEMPLATED WITHIN THE CLEARING OF THE ELEVATOR, THE OPTION IS GIVEN TO THE CLIENT WHO DECIDES THE PLACE OF THE UNIT. IT IS REQUIRED TO PLACE A NICHE TO HOUSE THE HYDRAULIC UNIT AND THE ELECTRICAL CONTROL, HAVING ACCESS FOR MAINTENANCE.

THE HYDRAULIC UNIT AND ELECTRICAL CONTROL MUST BE INSTALLED AND LOCATED IN A PLACE FREE OF DUST, LIQUIDS, AND INCLEMENT WEATHER, AVOIDING CONTAMINATION OF THE OIL AND LOSS OF THE EQUIPMENT WARRANTY.

THE ROUTE OF THE TUBING SHOULD NOT BE GREATER THAN 5.00 LINEAR METERS.

LOAD CENTER WITH THREE-PHASE POWER SUPPLY AT 220V, WITH THE NEUTRAL AND PHYSICAL GROUND WITH 3X40AMP THERMOMAGNETIC PROTECTION SWITCH, EXCLUSIVE FOR THE ELEVATOR.

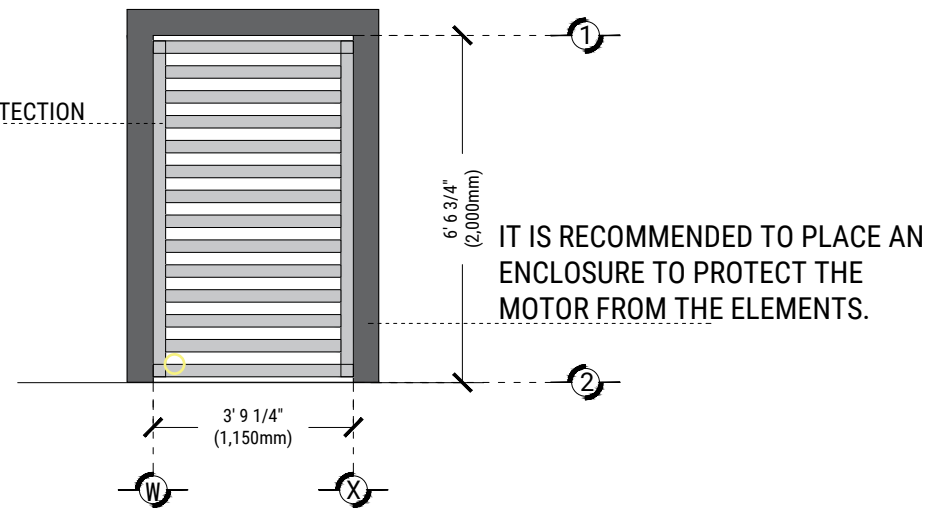
- CABLE GAUGE 8 AWG FOR DISTANCES UP TO 32' 9 11/16" (10,000mm).
- GAUGE 6 AWG FOR DISTANCES UP TO 49' 2 9/16" (15,000mm).
- FOR DISTANCES GREATER THAN 49' 2 9/16" (15,000mm), CONTEMPLATE THE CALCULATION OF CURRENT TO AVOID VOLTAGE DROP.

A COMPLETELY STRAIGHT DUCT OF Ø 3" FOR CHANNELING THE HYDRAULIC SYSTEM.

FOR SECURITY, IT SHOULD NOT BE MANIPULATED BY UNAUTHORIZED PERSONNEL.

BY IGNORING THE INDICATIONS ALREADY DICTATED AND THE EQUIPMENT HAS A FAULT, PARKMATIC WILL NOT BE RESPONSIBLE FOR THESE, IN ADDITION TO THE FACT THAT THE GUARANTEE YEAR WOULD NOT COVER THESE DAMAGES.

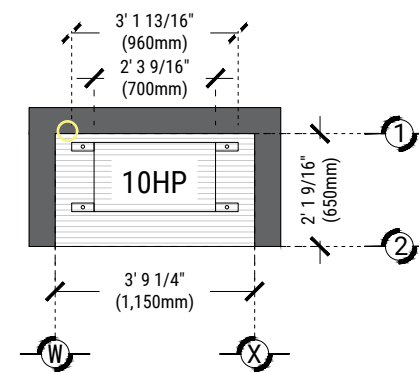
LOUVER DOOR FOR EQUIPMENT PROTECTION



**DESCRIPTION OF HYDRAULIC UNIT  
CABINET (FRONT VIEW)**

HYDRAULIC UNIT DESCRIPTION	
HYDRAULIC UNIT	10HP
ALIMENTATION	220 VCA
NUMBER OF PHASES	3
CONSUMPTION AMPERES	27
CONSUMPTION WATTS	7.4 KW
TYPE OF OIL	ISO 68

**HYDRAULIC UNIT  
10HP**



**DESCRIPTION OF HYDRAULIC UNIT  
CABINET (FLOOR VIEW)**

### GENERAL NOTES

1. THIS DRAWING IS THE PROPERTY OF PARKMATIC AND IT MAY NOT BE REPRODUCED IN WHOLE OR PART OR USED FOR THE MANUFACTURE OF ANY ARTICLE WITHOUT PRIOR WRITTEN CONSENT.

2. WORK TO FIGURE DIMENSIONS ONLY.

3. THIS DRAWING IS TO BE READ IN CONJUNCTION WITH ALL RELEVANT ARCHITECT'S AND ENGINEER'S DRAWINGS AND SPECIFICATIONS.

### # KEY NOTES

REV	DESCRIPTION	DATE
4		
3		
2		
1		

**PARKMATIC**  
NEW YORK OFFICE, USA  
75 PLANDOME RD, 2FL  
MANHASSET, NY 11030  
P: +1-800-422-5438  
W: www.parkmatic.com

CLIENT: MJM ASSOCIATES CONSTRUCTION, LLC

SYSTEM: VOX ELEVATOR

ADDRESS: 2079 3RD AVE.  
THE BRONX, NY 10451

TITLE: HYDRAULIC UNIT

SCALE: N/A DATE: 08/23/2022 DRAWN: SR CHECKED: MW

DRAWING NO. BX-VE-01 SHEET 03 OF 05

## ELEVATOR SAFETY

SAFETY MECHANISMS IN ELEVATORS ARE A FUNDAMENTAL PART OF THE PLACEMENT AND START-UP OF OUR EQUIPMENT.

THUS, EVERY TIME AN ELEVATOR IS USED, TAKE INTO ACCOUNT SOME BASIC POINTS.

- DO NOT PUT YOUR HANDS, FEET, HEAD, OR ANY OBJECT OUT OF THE ELEVATOR, WHEN IT IS IN OPERATION.
- DO NOT OPERATE THE LIFT WHEN THERE IS A HYDRAULIC FLUID LEAK.
- RESPECT THE INDICATIONS WITHOUT EXCEEDING THEIR WEIGHT CAPACITY.
- DO NOT OPERATE THE EQUIPMENT WITHOUT FIRST HAVING BEEN DELIVERED BY A PARKMATIC SPECIALIST.
- NEVER USE THE LIFT IN CASE OF FIRE.
- DO NOT OPERATE THE LIFT IF THE STEEL CABLES ARE FRAYED

## INSTALLATION REQUIREMENTS

THE PIT WILL BE IN OPTIMAL CONDITIONS (NO PUDDLES INSIDE THE PIT, AN AREA FREE OF ANY OBJECTS OR MATERIALS UNDER CONSTRUCTION, AND FREE ACCESS TO TRANSPORT THE EQUIPMENT TO THE INSTALLATION AREA).

FOR THE INSTALLATION OF THE ELEVATOR, IT IS NECESSARY TO HAVE 220V POWER TO CONNECT A WELDING MACHINE, TO 2 PHASES AND IT MUST HAVE A CONSUMPTION CAPACITY OF 60 AMP. FREE. IF THIS POWER SUPPLY IS NOT AVAILABLE, THE LIFT CANNOT BE INSTALLED ON THE AGREED DATE. AND A NEW AVAILABLE INSTALLATION DATE WILL BE GIVEN, ACCORDING TO OUR INSTALLATION SCHEDULE.

THE CIVIL WORK REQUIRED BY PARKMATIC MUST BE READY ON THE AGREED DATE SO AS NOT TO RESCHEDULE THE INSTALLATION OF THE EQUIPMENT.

CONSIDER ACCESS FOR OUR PARKMATIC EQUIPMENT, SINCE THESE ARE ARMED AND IF THERE IS NO SPACE TO ACCESS WITHOUT INCONVENIENCE, DISCUSS THIS WITH YOUR DESIGNATED VENDOR AND THUS TAKE THE NECESSARY PRECAUTIONS.

## EQUIPMENT SPECIFICATIONS

- LINE RISER COLOR
- ARMED TEAM
- FULL COLUMNS

## ADDITIONAL COMPONENTS FOR THE TEAM

- BUTTON PANELS CHanneled BY PARKMATIC.
- DOUBLE ACCESS
- 2 HYDRAULIC DOORS 1 IN EACH STATION

### GENERAL NOTES

1. THIS DRAWING IS THE PROPERTY OF PARKMATIC AND IT MAY NOT BE REPRODUCED IN WHOLE OR PART OR USED FOR THE MANUFACTURE OF ANY ARTICLE WITHOUT PRIOR WRITTEN CONSENT.

2. WORK TO FIGURE DIMENSIONS ONLY.

3. THIS DRAWING IS TO BE READ IN CONJUNCTION WITH ALL RELEVANT ARCHITECT'S AND ENGINEER'S DRAWINGS AND SPECIFICATIONS.

### # KEY NOTES

4		
3		
2		
1		
REV	DESCRIPTION	DATE

**PARKMATIC**  
NEW YORK OFFICE, USA  
75 PLANDOME RD, 2FL  
MANHASSET, NY 11030  
P: +1-800-422-5438  
W: www.parkmatic.com

CLIENT: MJM ASSOCIATES CONSTRUCTION, LLC

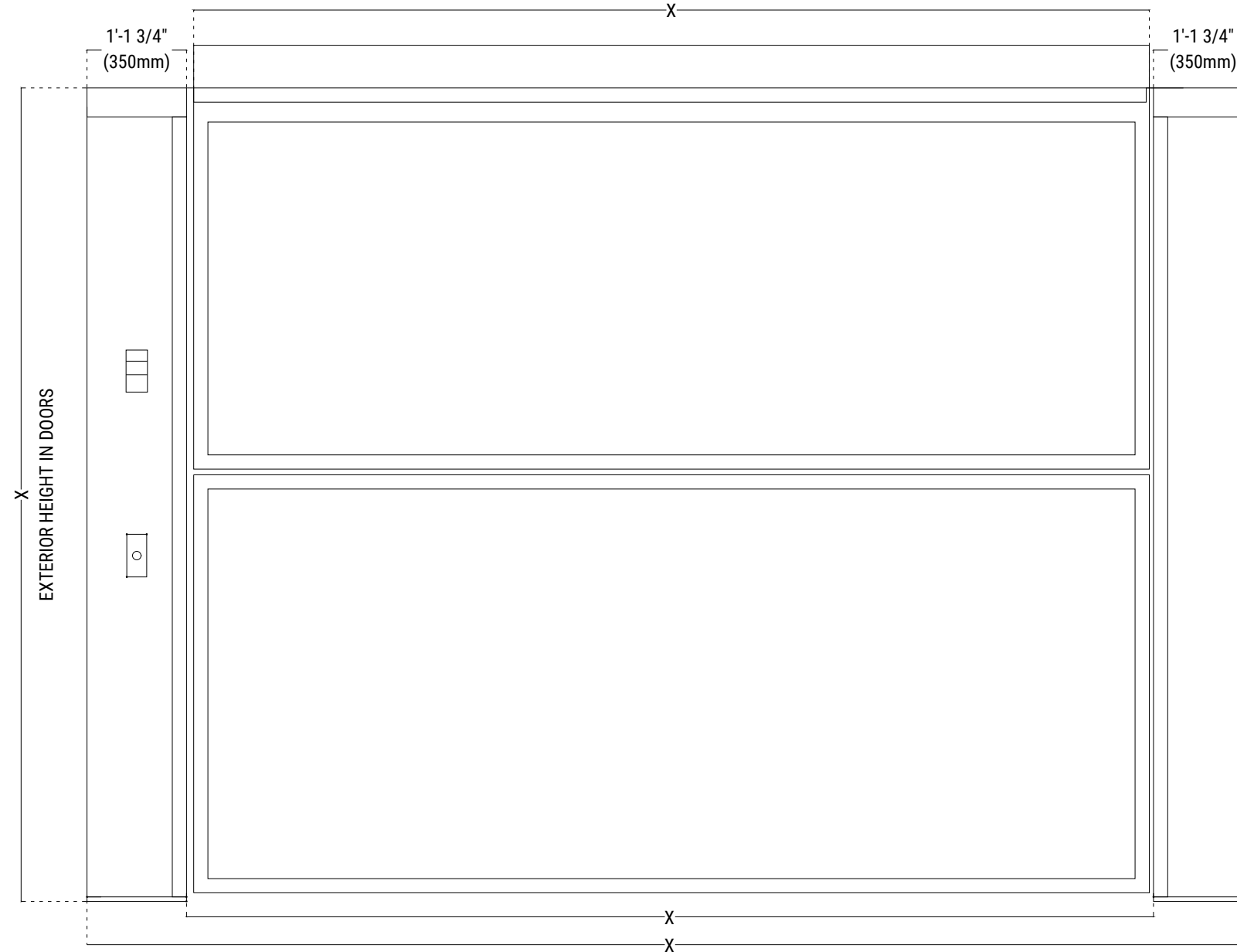
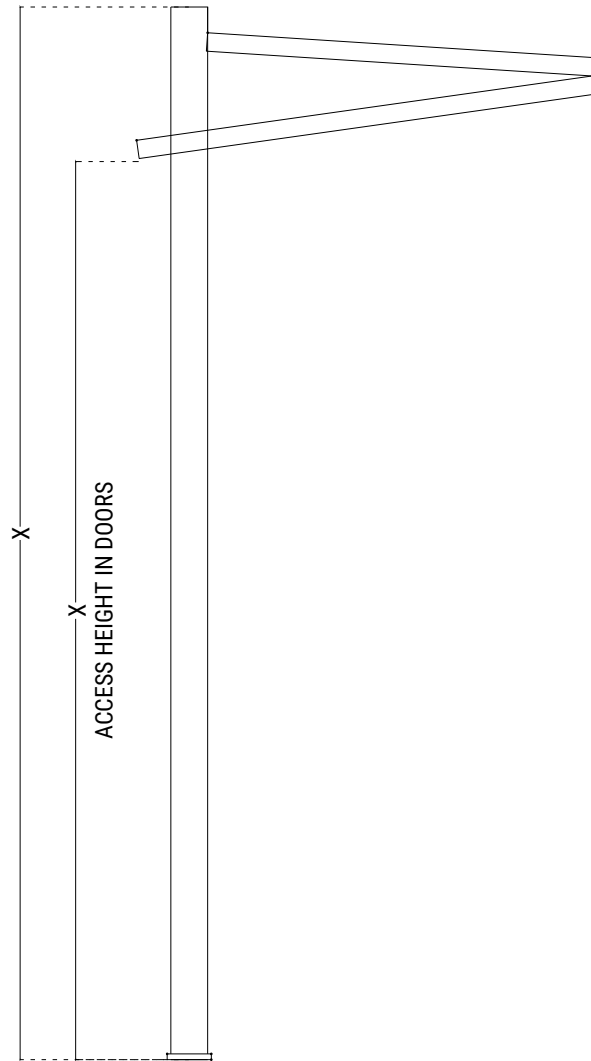
SYSTEM: VOX ELEVATOR

ADDRESS: 2079 3RD AVE.  
THE BRONX, NY 10451

TITLE: SAFETY & REQUIREMENTS

SCALE: N/A    DATE: 08/23/2022    DRAWN: SR    CHECKED: MW

DRAWING NO. BX-VE-01    SHEET 04 OF 05



**GENERAL NOTES**

1. THIS DRAWING IS THE PROPERTY OF PARKMATIC AND IT MAY NOT BE REPRODUCED IN WHOLE OR PART OR USED FOR THE MANUFACTURE OF ANY ARTICLE WITHOUT PRIOR WRITTEN CONSENT.
2. WORK TO FIGURE DIMENSIONS ONLY.
3. THIS DRAWING IS TO BE READ IN CONJUNCTION WITH ALL RELEVANT ARCHITECT'S AND ENGINEER'S DRAWINGS AND SPECIFICATIONS.

**# KEY NOTES**

HYDRAULIC DOOR, HEIGHT OF INSIDE CAB HEIGHT

4		
3		
2		
1		
REV	DESCRIPTION	DATE

**PARKMATIC**  
 NEW YORK OFFICE, USA  
 75 PLANDOME RD, 2FL  
 MANHASSET, NY 11030  
 P: +1-800-422-5438  
 W: www.parkmatic.com

**CLIENT:** MJM ASSOCIATES CONSTRUCTION, LLC

**SYSTEM:** VOX ELEVATOR

**ADDRESS:** 2079 3RD AVE.  
THE BRONX, NY 10451

**TITLE:** HYDRAULIC DOOR

<b>SCALE:</b> N/A	<b>DATE:</b> 08/23/2022	<b>DRAWN:</b> SR	<b>CHECKED:</b> MW
<b>DRAWING NO.:</b> BX-VE-01		<b>SHEET:</b> 05 OF 05	